



July 20 2009

Part One: Articles

- **Veterinary Notes**
- **Astrology**
- **Cats Exploit Humans by Purring**
- **Quote & Thought of the Day**
- **Pagan Police get Solstice & Halloween Leave**
- **Multi-faith Calendar**
- **Ancient Cultures – The Mayan**
- **Poets Retreat**

Part Two: Tradition Announcements & Adverts

- **New Announcements:**
- **Temple, Shrine, Order and Study Group Services**
- **Listed Orders & E-Groups**
- **Other Publications**
- **Correllian Herald Subscriptions**

The Correllian Herald in pdf can now be accessed from the pages of correllian.com

Please submit all articles, adverts, letters and features for the Herald to:
heraldeditor@googlemail.com

The Correllian Herald is best viewed in pdf format:

Subscribe PDF Format: CorrellianHerald-pdf-subscribe@yahoogroups.com
Download a free copy of Adobe Reader: <http://www.adobe.com/>

Disclaimer: Any views expressed within the articles in this publication are not necessarily the views of the Correllian Tradition the Correllian Herald Publication or the Correllian Herald Editors. Any egroups advertised within the Herald which are not part of or affiliated to the Tradition are not endorsed by the Tradition.

Veterinary Notes

Rev. Mehitabel

Hedgehogs

Advice from the RSPCA:

<http://www.rspca.org.uk/servlet/Satellite?pagename=RSPCA/RSPCARedirect&pg=wildlifeadvice&marker=1&articleId=1024473673415>



If you've got a garden, hedgehogs are useful visitors. They will eat slugs, beetles, caterpillars and a variety of other insects.

To attract hedgehogs to your garden you can try providing natural shelter - 'wild' areas - or man-made - a piece of board against a pile of bricks to form a type of bivouac.

Food and fresh water at any time of the year will encourage visiting hedgehogs to return regularly. You could try leaving out minced meat, fresh liver, tinned dog food (not fish-based), or even chopped boiled eggs.

Hedgehogs like milk but it may give youngsters severe diarrhoea. So it's safest to use either goats' milk or very diluted cows' milk. But the best choice is plain, fresh water each night in a shallow bowl.

Garden dangers

- Garden ponds can be death traps to small animals - make sure there is always an easy way out. House brick steps or wire mesh are often used.
- Strimmers should be used sparingly under hedges and undergrowth - hedgehogs and other animals are likely to be resting there during the day.
- Drains and similar open holes frequently trap unwary hedgehogs, which can starve if they are not rescued. Keep all drain covers in good condition and cover any holes.

- Litter is a real hazard - hedgehogs often get their heads stuck in tins, plastic binders from drinks cans or discarded yogurt pots. Dispose of yours carefully.
- Nets, particularly those used for tennis, football or cricket, must be furled well above ground when not in use - hedgehogs often get entangled and die of starvation. Fruit nets are also dangerous but can be kept taut to stop animals getting entangled.
- Slug pellets can poison hedgehogs and should only be used as a last resort. Instead, try using beer traps, or sprinkling fine sand or ground-up shells around the plant you need to protect. If you have to use slug pellets, place them under a slate.

Hibernating hedgehogs

Hedgehogs hibernate between November and mid-March. Try to keep aside a hedgehog-friendly area of garden where you can leave welcome heaps of leaves and brushwood. If you have to light a bonfire, always make sure there are no animals sheltering in the middle of the pile.

Autumn orphans

Hedgehogs born late in the season will not have sufficient fat reserves to survive hibernation. Young orphans found weighing less than 500g (1.1lb) at the end of the autumn will need to put weight on to see them through the winter or, if left, will probably die.

Orphans found weighing under 500g after mid-October can be housed indoors and fed two heaped tablespoons of food daily - including small amounts of crushed dog biscuits to provide bulk and roughage - to put on weight before being released to hibernate.

A garage or similar building is an ideal temporary home, but don't put hedgehogs on a metal grid or wire floor - they have sensitive feet! Place the hedgehog in a large box with plenty of clean, fresh hay, crumpled newspapers or dry leaves.

If the orphan is very young it should be kept warm - a hot water bottle wrapped in a towel is ideal. Also take care to keep direct human contact to a minimum so that the animal does not become unnaturally tame.

On reaching a weight of between 550 and 680g (1.2lb-1.5lb), the young hedgehog - if active and while the weather is still relatively mild - can be released at night back to the area where it was found.

If an alternative release site is required, select an area where there are invertebrates, no potential hazards and signs of other hedgehogs being active in the local area. Continue to provide food and a shelter with nesting material to help the hedgehog build a winter nest.

photo © Mark Hamblin/RSPCA Photolibrary

Astrology

Rev. Leona

This week we are still dealing with personal issues as we continue our journey to the second house.

The second house deals with your personal values and desires. In this house you will delve into the realm of material possessions and your own self worth. The Second House asks you many questions that you will need to work through. Do you judge your own success by your material possessions? Do you feel jealousy over the success and possessions of others? The Second House makes you face all of the notions you hold concerning money and the value you place on material possessions. Inside this house you will be given many tasks designed to help you understand your own reactions to money and money issues in your life. Knowing how and why you react the way you do towards money will empower you with the necessary tools to begin to break free of the many chains that surround you. For instance you may finally be able to understand the role that money plays in your life. You will understand why you have certain spending and saving habits. Do you see material possessions as the epitome of class and prestige? Do you spend all your money or do you save for the future?

One of the key elements of the Second House is to bring your view of material possessions back into perspective. This house asks you to look at the way you view your own possessions. Do they lie in the background of your life and fill up with dust or do they take center stage and devour all of your life. Do you count stages in your life by the possessions that you have been able to acquire? The Second House brings your own notion of possessions into the forefront of your life today. During this process you will need to take time to really look through your house. When you do this you will begin to see many patterns. Do you have many possessions? What type are they? Do you leave them out to show off or do you hide them away from prying eyes? Do you covet the items that others have? Do you define yourself, your status, your success by what resides in your house?

One thing to remember about the types of possessions of the Second House is that they are all portable items. Items such as your furniture, electronics and collectibles fall within the domain of this house. Take the time to look around your house and see what types of possessions you have. Do you have a great deal of collections? What types of items do you collect? Do you have many books? sculptures? electronics? Why do you collect them? Do you have a personal reason for collecting these items? Do you show them off or do you keep them hidden where only you will be able to enjoy them? What place do these items take in your home and in your life?

In the Second House you will be working with the items that you have acquired and will acquire over your lifetime. These are the portable items that you will take with you throughout all of your life as well as the disposable items that come and go. The Second House asks you: What items do you buy for the long haul and which items do you feel can be bought over and over again? What differentiates them from each other? You will need to take time to see what you really value. Look at the items that you freely throw away. Look at the items you keep. How do you feel when you throw items away?

The Second House wants you to be able to understand the role of possessions in your life. There is nothing wrong with having possessions that play an important role in your life. Some possessions can be a key ingredient to identifying who you are. If you like to read

Tarot cards and you collect many different decks then this is an indication of a love as well as a calling that you have. If you like to sculpt then collecting different pieces of wood and tools will allow you to visualize many different projects and continue to inspire you in what you do. Do you collect cats because of an ancestor who used to collect cats and when you spend time with them they make you feel closer to this departed loved one? All of these would be useful and productive roles of possessions. All of these possessions are used to help you to connect with parts of yourself that will inspire you and drive you to seek perfection.

Western society has grown into a society that prides itself on the amount of items that one is able to acquire. The development and cementation of capitalism has placed more emphasis on the item then on the person. You are not a valuable person unless you happen to own the correct item. How many people are known by the clothes they wear, the car they drive and the literature they collect. How many magazines spout off the items collected by celebrities and how many times do you watch television only to see some new item or product being marketed to you. The purpose of the work of the Second House is to keep you from falling into the trap that so many seem to have fallen into. Here you will be able to see how you have been programmed by your society to label yourself by what and how much you can acquire. The Second House tells you that you are an individual with individual tastes and beliefs and that you should not let the masses dictate to you what will make you happy.

The Second House will illuminate many different aspects of yourself. During this process you will face many issues that you may not be ready to face. One of the obstacles of this house is to return to the source of many of your present views and biases. The Second House will transport you back to your early childhood where many of your attitudes and ideas about money and possessions were developed. Many of the ideas and attitudes that we have about money and possessions come from the way we saw others treated their money and their possessions. The Second House will help you answer the question "What does money mean to you?" These notions have all been imprinted upon you. Now you have to go back and understand where your love or hate of money came from.

While you continue to look at your past, you will have to face this question: Where your needs met when you were a child? One of the reasons people loose sight of the role of possessions in their life is that they did not receive everything they needed during their developmental years and as a result they suffer from a terrible lack of security. For this reason the possessions begin to compensate for this lack and only with more possessions can these people fool themselves into believing that they had a happy and healthy childhood. When you look at your formative years you will be able to identify the source of your own feelings of security. Facing your past will allow you to change and bring harmony and control back into your life.

The Second House will challenge you to face your desires. By looking at the items you collect you will eventually have to ask yourself: Why? What drives you to collect these items? What are the desires that you hold deep down inside that you need to feed? The Second House will show you ways to satisfy the desires of your heart without compromising the values you live by. When you are willing to allow your material desires to cloud your values then you will be forced to see the damage that you have helped to create. Are you willing to sacrifice every thing you have to satisfy these desires? By working harmoniously with the Second House you will learn to control your desires instead of the desires controlling you.

During your examining of the Second House you will see the role that your own talents and skills have played. Looking back at your life you will eventually have to ask yourself: What types of activities have paid off for me? The Second House will tell you about the type of career or money making endeavors that are best suited for your talents. The Second House asks: Have you made more money being self-employed? Have you made more money with more education? How you have made money in the past will shed a light on the ways you can continue to make money in the future.

When examining the Second House issues you will eventually have to face your own self-worth. How you value yourself is reflected by how you treat your material surrounding. People can tell if you are trying to compensate for things. The Second House challenges you to find your own self-worth. You will find that when you are working with the Second House that you cannot hide. All of the fears and doubts that you have tucked away and hidden from will come out and you will have to face them. The Second House may indeed shake up your sense of security if you have created intricate illusions around yourself.

The Second House will open up to you and you will explore the rooms filled with beautiful things, money, success and hopes. You will see your self-worth, your sense of security, your values and your desires. You will have to find the way to balance the inner and the outer realms of this house. Be confident in knowing that there is no issue in the Second House that you cannot face, understand and overcome. When you heed the message of the Second House you will be able to understand yourself more than you ever have before.

Rev. Leona Dineen-Hass

Cats 'exploit' humans by purring

Rev. Nehal

Cat owners may have suspected as much, but it seems our feline friends have found a way to manipulate us humans.

Researchers at the University of Sussex have discovered that cats use a "soliciting purr" to overpower their owners and garner attention and food.

Unlike regular purring, this sound incorporates a "cry", with a similar frequency to a human baby's.

The team said cats have "tapped into" a human bias - producing a sound that humans find very difficult to ignore.

Dr Karen McComb, the lead author of the study that was published in the journal *Current Biology*, said the research was inspired by her own cat, Pepo.

"He would wake me up in the morning with this insistent purr that was really rather annoying," Dr McComb told BBC News.

"After a little bit of investigation, I discovered that there are other cat owners who are similarly bombarded early in the morning."

While meowing might get a cat expelled from the bedroom, Dr McComb said that this pestering purr often convinced beleaguered pet lovers to get up and fill their cat's bowl.

To find out why, her team had to train cat owners to make recordings of their own cats' vocal tactics - recording both their "soliciting purrs" and regular, "non-soliciting" purrs.

"When we played the recordings to human volunteers, even those people with no experience of cats found the soliciting purrs more urgent and less pleasant," said Dr McComb.

How annoying?

She and her team also asked the volunteers to rate the different purrs - giving them a score based on how urgent and pleasant they perceived them to be.

"We could then relate the scores back to the specific purrs," explained Dr McComb. "The key thing (that made the purrs more unpleasant and difficult to ignore) was the relative level of this embedded high-frequency sound."

"When an animal vocalises, the vocal folds (or cords) held across the stream of air snap shut at a particular frequency," explained Dr McComb. The perceived pitch of that sound depends on the size, length and tension of the vocal folds.

"But cats are able to produce a low frequency purr by activating the muscles of their vocal folds - stimulating them to vibrate," explained Dr McComb.

Since each of these sounds is produced by a different mechanism, cats are able to embed a high-pitched cry in an otherwise relaxing purr.

"How urgent and unpleasant the purr is seems to depend on how much energy the cat puts into producing that cry," said Dr McComb.

Previous studies have found similarities between a domestic cat's cry and the cry of a human baby - a sound that humans are highly sensitive to.

Dr McComb said that the cry occurs at a low level in cats' normal purring. "But we think that (they) learn to dramatically exaggerate it when it proves effective in generating a response from humans."

She added that the trait seemed to most often develop in cats that have a one-on-one relationship with their owners.

"Obviously we don't know what's going on inside their minds," said Dr McComb. "But they learn how to do this, and then they do it quite deliberately."

So how does Dr McComb feel about Pepo now she knows he has been manipulating her all these years?

"He's been the inspiration for this whole study, so I'll forgive him - credit where credit's due."

Source: <http://news.bbc.co.uk/1/hi/sci/tech/8147566.stm>

Quote & Thought of the Day

Rev. Nehal

Quote of the Day:

If people become better Hindus, better Muslims, better Buddhists by our acts of love, then there is something else growing there.

Mother Teresa

Source: www.ascensiongateway.com

Thought of the day:

Even if you've failed ten thousand times, success is within your reach. Just because you've made mistakes does not mean you must continue to make them.

Simply realizing that you've made an error is a major step toward correcting that error and getting past it. The beauty of now is that it's the end of your past and the beginning of whatever future you choose.

If you're satisfied with where you've been headed, then by all means keep going there. If you're disappointed with what has been, now is your chance to set a different direction for what can be.

Imagine how great it would feel to know that you're successfully living life on your own terms. Imagine it, and then know that even now you can make that feeling real.

You already know that your actions have very real consequences, for you are living those consequences today. This is your opportunity to choose the consequences you most desire by taking the positive actions that will bring them about.

Always, success is yours to define and create. Choose now to make it happen.

-- Ralph Marston

Source: <http://greatday.com/motivate/index.html>

Compiled by: Rev. Nehal

"Pagan Police get Solstice and Halloween Leave"

<http://wwrn.org/article.php?idd=31365>

London, UK - Pagan police officers in some areas are being allowed to take as many as eight days leave a year for events such as the summer solstice and Halloween.

It comes after the Pagan Police Association was set up following discussions with Home Office officials.

Policy on police leave varies between forces in England and Wales.

Hertfordshire Police lets Pagan staff re-allocate the traditional bank holidays to meet their beliefs - it has also appointed two Pagan chaplains.

Pc Andy Pardy, a Pagan neighbourhood beat officer in Hemel Hempstead, Herts, was one of the officers involved in setting up the association.

Tree-huggers

He told Police Review: "Paganism is not the new age, tree-hugging fad that some people think it is.

"It is not the clandestine, horrible, evil thing that people think it is. A lot of people think it is about dancing naked around a fire.

"But the rituals involve chanting, music and meditation. For Pagans, the practices are seen to have the same power as prayer does for Christians."

Pc Pardy is allowed to take eight days per year for Pagan events - which form part of his annual leave.

Pagans worship nature and believe in many gods and their practices include witchcraft and druidism.

According to the Office of National Statistics there were 31,000 people practising Paganism in England and Wales in 2001.

Another officer, Pc Andy Hill, of Staffordshire Police, is a practising Wiccan - a kind of Pagan witch.

Healing spells

He has offered to use spells to give fellow officers a helping hand with promotion exams or to heal ill colleagues and is the founder of the Pagan Police Group UK, a website for Pagan police officers and their families.

He told Police Review: "Wiccan has always been a bit of a taboo religion, there are lots of misconceptions about it.

"This is nothing to do with black magic or devil worshipping. Witchcraft is not the hocus pocus, puff of smoke, turning people into frogs stuff you see on television. It is working with nature for good."

Superintendent Simon Hawkins, of Hertfordshire Police, said:

"While balancing operational needs, the force's religion and belief's policy gives all staff the choice of re-allocating the traditional Christian bank holiday festivals to suit their personal faith beliefs and this has been very well-received from a number of faith groups including Muslim and Jewish.

No public funding

"The force strives to provide a receptive environment for all its staff and our faith work stream is a positive example of our commitment to meet the diverse needs of all who work for us and the public we serve."

A Home Office spokesman said: the Pagan Police Association did not receive any funding from the Home Office.

He added: "The government wants a police service that reflects the diverse communities it serves.

"It is down to individual forces to make reasonable adjustments to accommodate the religion or beliefs of individual officers, as far as operational requirements permit."

Multi-faith Calendar

Rev. Nehal

Multifaith Calendar - Coming up:

20th July

Zoroastrian: Jamshedi Noruz (Qadimi)

Noruz is the seventh obligatory feast and it is dedicated to fire. It is the Zoroastrian New Year celebration, and occurs on the spring equinox.

Noruz is so deeply embedded in Iranian culture that it is still celebrated as the Iranian New Year in Islamic Iran, although without the religious connotations. Many fires are lit and there is feasting and celebrations. In modern times fireworks have also become part of the festivities.

Source: <http://www.bbc.co.uk/religion/religions/zoroastrian/holydays/noruz.shtml>

Rev. Nehal

Maya

Rev. Nehal

Mayan Ancient Culture Background Beliefs Overview Traditions

Part 2

The Tzolk'in *Sacred Round* Calendar used the 13 sacred numbers and 20 sacred glyphs. There were 4 smaller cycles or seasons of 65 days each that were guarded by Chicchan, Oc, Men and Ahau, the four suns. The Tzolk'in Calendar was meshed with the Haab Calendar, and it took them 52 years to move through a complete cycle. Within the Tzolk'in Calendar, there were portal days when double helix patterns were created using the mathematics of 28 and 52 days. All over the Yucatan, Guatemala, Belize, and Honduras, the sacred Tzolk'in Calendar was used for divination by the traditional Mayan.

The Haab Calendar was based on the cycles of the earth, Calendar Round had 365 solar days. The Haab Calendar used 18 months with 20 days in each month plus a 19th month with 5 days, $360 + 5 = 365$ days. Each day and month had its own name and glyph. Some Mayan day names with approximate meanings were: Ak'bal - Night or House, Ahaw - Lord, Ben - Corn stalk or Reed, Chuen - Monkey, Chikchan - Snake, Chuwen - Frog, Eb - Skull, Ik' - Wind, Etz'nab - Flint or Knife, Imix - Water lily or World, Ik' - Wind, Ix - Jaguar, Kaban - Earth, K'an - Corn, Kib - Soul, Kawak - Storm cloud, Kimi - Death Head, Lamat - Venus, Manik - Hand, Men - Eagle, Muluk - Water, and Ok - Dog.

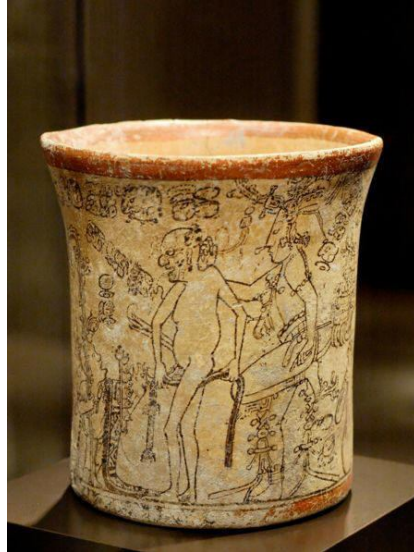
The Tun-Uc Calendar mirrored the woman's 28 day moon cycle. The 28 days were divided into 4 cycles of 7 days each which correlated to the four phases of the moon. Typical Mayan inscriptions contained portal days and lunar reckonings.

According to the Creation Legends of the Maya, the Supreme Creator god Hunab Ku created four new worlds, rebuilding the landscape four times after deluges had poured from the mouth of the sky serpent. What this legend refers to are four times where god Hunabku acted as a benefactor and mentor to the souls inhabiting the physical plane bodies of the people known as the Maya.

The verb "to pour" along with its synonyms has many meanings applicable to the Maya storytelling. It also means to dispense, to mete out, to discharge, to swarm, to detonate, to explode, to emit fire, to transfer, to empty, to decant, to emit, to relocate, to shift, to reassign, to remove, to eradicate, to confiscate, to take out, and to eliminate.

The First Maya World referred to the first time god Hunab Ku helped to rebuild the Maya World was after the first time fiery catastrophe poured from the mouth of the sky serpent. This correlated to the relocation to Earth of the Shaman Star Teachers, currently called the Pleadians, after their homeworld planets now known as Mars was rendered inhabitable.

Acting as a Shamanic Psychopomp, he helped the millions of inhabitants of the planet that once existed in the solar system environs where the asteroid belt is located today. When their planet was destroyed, they were stranded in the fourth dimensional ethers without third dimensional biochemical shells available to them. He also helped to genetically engineer triage replacement biochemical shells for them on Earth on the continent of Lemuria so that they might continue their evolutionary spiral with his help as a mentor and benefactor.



*Maya Codex Style Terracotta 7-10th Century Vase
Northern Petén (Guatemala) Depiction of Maize Divinity Stripping
Underworld Lord of his Clothes and Headgear
Image Courtesy of Marie-Lan Nguyen*

The Second Maya World referred to the second time god Hunab Ku helped to rebuild the Maya World was after the second time fiery catastrophe poured from the mouth of the sky serpent. This correlated to the time when usurpers from another galaxy hit and sank the continents of Lemuria and Atlantis with asteroids from the remains of their former homeworld.

At that time, he helped with the relocation of the Maya to Mesoamerica and the Yucatan. He was assisted in this effort by the elemental Dwarves who helped the Maya with the quality stonework used to construct the Sacred Stone buildings in the villages they were to inhabit after the Shaman Star Teachers left Lemuria and relocated to the Pleiades and became known as the Pleiadians.

The Third Maya World referred to the third time god Hunab Ku helped to rebuild the Mayan World was after the third explosive and confiscatory catastrophe poured from the mouth of the sky serpent. This correlated to the time when an obscure extraterrestrial race of "offenders" from the environs of Sirius, who were called the Dzolob by the Maya, usurped and confiscated the inhabitations and Sacred Mounds of the Maya.

The motivations and reasons of the Dzolob, who are the present day Sirians, for doing this were extremely complex. Feeling abandoned by the Orion Achievers and the Pleiadian Shamans and frustrated because they were vibrationally unable to relocate with either the fifth dimensional Orion Achievers or the sixth dimensional Pleiadian Shamans, they tried to quench their overwhelming thirst for knowledge keys and ascension merkaba techniques with a "No Holds Barred" and "Whatever it Takes" attitude.

During the early phases of the Third Maya World, Sacred Mounds were overlaid with pyramidal stone temples. Over the course of time, these pre existing older temples were then in turn often overlaid with new stone structures. This was the *Dark Times* when the Maya were forced to built the stone pyramids over their Sacred Mounds and then coerced into doing sacrificial rituals under the ill advised, imprudent, and injudicious instructions of their usurper oppressors who were negatively thought adjusted by fallen angels from the fourth dimension and demons who sometimes temporarily possessed the bodies of both the Maya

and the Dzolob to further their dark designs and evil agendas against humanity and all things bright and beautiful.

A short time after god Hunab Ku was informed of what had happened to the Maya Sacred Mounds and the bloody sacrificial rituals taking place there, he returned from the Pleiades for a brief period to cleanse and scour the landscape of the Maya. At that time, the Dzolob Sirians retreated underground to live in cozy, elaborately constructed, well appointed, and comfortably furnished caves.

The Maya relocated elsewhere in Mesoamerica and the Yucatan with the help of Hunab Ku. They moved into areas in the countryside where the ethers were still pristine and unsullied. He also gave them specific spiritual guidelines to live their daily lives by until the Pleiadians were once again able to return to the Earth and act as benefactors and mentors to them.

This was the timeframe when all the cities were mysteriously abandoned by the Maya. It also corresponds to the Third World that Hunab Ku created for the Maya where they could live by themselves. It was meant to be the final or last world that the Maya would inhabit before the coming of the Fourth Flood and the return of god Hunab Ku to help create the Fourth World.

The Fourth Dispensational Shift refers to the present day circa 2005 ACE when the planetary spheres have finally made the axis shift into the long awaited humanitarian Age of Aquarius. Once again Hunab Ku has returned from the Pleiades. This time to help create in the Fourth World.

The Fourth Maya World referred to the coming of the Fourth Flood and the return of god Hunab Ku to help create the Fourth World refers to the Fourth Dispensational Shift. This phase transition has now happened in the present day circa 2005 ACE.

The planetary spheres have finally made the axis shift into the long awaited humanitarian Age of Aquarius, and god Hunab Ku has once again returned from the Pleiades. This time, he will help create in the Fourth World.

Source: http://www.angelrainbows.com/Ancient_Cultures_Maya_Mayan.htm

Poets Retreat

Poetry supplied by members of the Order of Bards

Touch

Touch me with your eyes so gentle, full of love.
Touch me with your breath, sweet and warm against my neck.
Touch me with your kiss so passionate with desire.
Touch me with your heart, ever true and mine alone.
Touch me with your soul, let its light shine over me.
Touch me.

Sajamoonstone © January 2009

All poetry provided here is the copyright of its author, if you wish to use any of the poems supplied by the Order of Bards please ask permission first.

CORRELLIAN HERALD ANNOUNCEMENTS & ADVERTISEMENTS

- **Announcements:**
- **Correllian Degree Program Through Witchschool**
- **Witchschool Referral Program**
- **Online Courses through Temples & Shrines**
- **Clergy and Outer Court Applications**
- **Temples and Shrines Online Rituals**
- **Services Provided by Temples, Shrines, Orders and Correllian Study Groups**
- **Correllian Award Orders**
- **Correllian E-groups**
- **Other Correllian Publications**
- **Correllian Herald Subscriptions**

Announcement

NROOGD Public Lammas

Walk the Maze and Reap the Harvest

Come Join NROOGD and Silver Salamander

When: August 2nd 2009
Gather at 2pm, ritual at 3 pm

Where: Live Oak Park
Berkeley, CA

Donation of \$10 - \$20 requested. NO ONE will be turned away for lack of funds.

For more information please contact Leeann

leaann.hays@yahoo.com

Correllian Clergy Degree Program

A new membership has been created called the Correllian Clergy Degree Program. This is a 3-year program that can help you earn your Wiccan Degrees and Legal Clergy Status. Of course every lifetime and supporting member has access to this main program.

The purpose of this level is for those individuals who are interested in gaining their clergy status, and this offers an opportunity for members to do so affordably.

This program is only \$49.99. To find out more:
<http://www.Witchschool.com/clergydegree.asp>

Witchschool Referral Program

Witch School, our long-time educational partner, has made an offer to the Tradition and its member Temples and groups.

Witch School has created a new Referral Program. The Tradition itself has enrolled in this program – as you can see from the button in the left-hand menu on [orrellian.com](http://www.orrellian.com). You are encouraged to consider enrolling your Temple or group as well, as a means of generating potential passive income.

The program works like this: members receive their own button which they can put on their website, in their email signature, etc... offering Witch School memberships. If anyone purchases a membership through your button, you will receive (approximately) 25% of the payment –that is \$4 of a \$19.99 yearly membership, or \$25 of a \$99.99 Lifetime Membership.

Each button has its own unique code which tracks payments made through it. If someone buys a membership through your button, then you get the abovementioned 25%.

If you are interested in finding out more about this program, or in signing up for it, go to www.witchschool.biz.

Witch School are offering a discount on supplies to Correllian Temples and groups in good standing: for example the Witch School books at 40% off cover price, and other discounts on the various items the school produces. If you would like to learn more about this, contact Lady Virginia at Virginia@witchschool.com and she will be happy to explain further.

These offers are being extended to all of our Correllian Temples, Proto-Temples, Witan Shrines, Formal Shrines, Personal Shrines, Orders, and Study Groups who might wish to sign up.

Online Courses through Temples & Shrines

Online Rituals Workshop provided by Sedna Temple and Isis Temple

A four lesson course held over four weeks.

This course is ongoing with an opportunity to retake it as it restarts every four weeks.

Lessons and tests provided through a yahoo egroup with back up lessons online.

Please go here to sign up: <http://groups.yahoo.com/group/Ritual-Classes/>

Course re starts on 4 November 08 and each further four week intervals

For more information: <http://correspondencecollegeofwitchcraft.co.uk/> or phone: +44 7528 092692

Goddess Sedna Course provided by Sedna Temple

A two lesson course held over two weeks.

This is an ongoing course with an opportunity to retake it as it restarts.

Lessons and tests provided through a yahoo egroup with back up lessons online.

For more information go here: <http://correspondencecollegeofwitchcraft.co.uk/>

or phone: +44 7528 092692

Goddess Isis Course provided by Isis Temple

A two lesson course held over two weeks.

This is an ongoing course with an opportunity to retake it when it restarts

Lessons and tests provided through a yahoo egroup with back up lessons online.

For more information go here: <http://correspondencecollegeofwitchcraft.co.uk/>

or phone: +44 7528 092692

Witches Runes Course provided by the Proto Temple of Lilith

Membership to the Proto Temple of Lilith is a requirement to access the course.

Any questions can be submitted to Rev. Lilith: klorenmef@ziggo.nl

Web Site: <http://shrineoflilith.bravehost.com>

Egroup: <http://groups.yahoo.com/group/ShrineOfLilith/>

If you have a course or class you would like to advertise here please send all information to the editor heraldeditor@googlemail.com

Clergy and Outer Court Applications

To apply for Clergy status with the Correll Mother Temple you may use the automated application at www.correllian.com listed under “applications” in the left hand menu bar, or you may write directly to one of several High Priestess who oversee the Correll Mother Temple Clergy Application Process. These are:

Rev. Virginia Powell, HP (US) at Virginia@witchschool.com

Rev. Anna Rowe, HP (EU/UK) at applications@sednatemple.co.uk

Rev. Raene Packery, HP (Africa) at applications@clanofkhepertemple.co.za.

The Temple of Selu Headquartered in Hoopeston, Illinois, the Temple of Selu is Headed by High Priestess the Reverend Virginia Powell. At the time of writing, the Clergy Requirements of Selu Temple are identical to those of the Correll Mother Temple. Clergy application fee: \$45

Website: www.selutemple.com

Apply to: Rev. Virginia Powell, Virginia@witchschool.com

The Temple of Sedna Headquartered in Suffolk, UK, the Temple of Sedna is Headed by High Priestess the Reverend Anna Rowe. At the time of writing, the Clergy Requirements of Sedna Temple are identical to those of the Correll Mother Temple. Clergy application fee: £27

Website: www.sednatemple.co.uk

Apply to: Rev. Anna Rowe, anna@sednatemple.co.uk

The Temple of the Enchanted Realm/PURE Sanctuary With offices in Hoopeston (Enchanted Realm) and Danville (PURE Sanctuary) Illinois, Enchanted Realm/PURE Sanctuary is Headed jointly by High Priestess the Reverend Reanna Marie (Hoopeston) and High Priest the Reverend Jason Mycroft (Danville). At the time of writing, the Clergy Requirements of Enchanted Realm Temple are identical to those of the Correll Mother Temple. Website: www.correllian.com/enchrealm.htm

Apply to: Rev. Alexander Ping at Alexander.ping@gmail.com

The Clan of Kheper Temple Headquartered in Cape Town South Africa, Clan of Kheper Temple is Headed by High Priestess the Reverend Raene Packery. Clan of Kheper Temple holds legal status through the Correllian Nativist Tradition of South Africa, which is an official Religious Organization in South Africa. At the time of writing the Clergy Requirements for Clan of Kheper Temple are identical with those of the Correll Mother Temple except for additional lesson assignments which are compulsory.

In addition the Clan of Kheper Temple asks a one-time non-refundable application fee of R350 payable before you are registered with the Mother Temple and certificates are issued, should your application be successful. Website: www.clanofkhepertemple.co.za

Apply to: Rev. Raene Packery at applications@clanofkhepertemple.co.za

Northern Lakes Temple Headquartered in southern Wisconsin, Northern Lakes is Headed by Rev. Peter Hertzberg. At the time of writing the Clergy Requirements for Northern Lakes are identical with those of the Correll Mother Temple except for requiring an additional course: to whit Rev. Terry Power’s Ethics Course. Website: www.northern-lakes.org

Apply to: Rev. Peter Hertzberg at revpeter.Hertzberg@northern-lakes.org

Temples and Shrines Online Rituals

If you would like to advertise your Temple Shrine Order or Correllian Study Group services please contact the editor: heraldeditor@googlemail.com

Online Rituals

Healing Temple Healing Rituals

Healing Ritual Every Friday

Place: Temple of Healing Ritual Room: www.healing-temple.co.uk

Room password: healing

Time: 9pm UK/BST and again at 9pm USA/EST

Australian East Coast 7pm.

Please go to the web site www.healing-temple.co.uk to request healing, candles or to be included in any of the healing lists or healing rituals.

Request a healing: healing@templeofcaduceus.com

Request a healing candle: candles@templeofcaduceus.com

Request a healing for Gaia: requestst@gaiאהealing.co.uk

Request an animal or pet healing: animalhealing@healing-temple.co.uk

Or phone: +44 7528 092692

8 Festival Temple Sabbat Rituals

[http:// templeofthesabbats.co.uk](http://templeofthesabbats.co.uk)

Sabbat online rituals dates are announced online.

Rituals held on or near the Sabbat date for both UK and USA time zones.

info@templeofthesabbats.co.uk phone: +44 7528 092692

Temple of the Moon New & Full Moon Rituals

[http:// templeofthemoon.co.uk](http://templeofthemoon.co.uk)

Moon Rituals (Full & New) Date: On the actual date (will be announced)

Monthly New Moon Ritual (dates vary each month)

Place: Temple of the Moon Ritual Room: www.templeofthemoon.co.uk

Room password: Moon

Time: 9pm UK/BST/GMT and again at 9pm USA/EST

info@templeofthemoon.co.uk phone: +44 7528 092692

Temple of Gaia Rituals for Healing Gaia

Healing Gaia Rituals, online rituals for the earth and all it's inhabitants, flora fauna.

Monthly Gaia Healing Ritual Every third Tuesday of the Month.

Place: Temple of Gaia Ritual Room: www.gaiאהealing.co.uk

Room password: ritual

Time: 9pm UK/BST and again at 9pm USA/EST

For more information or to request a healing ritual for anything relating to Gaia:

info@gaiאהealing.co.uk phone: +44 7528 092692

Living Stones Memorial Temple Memorial Rituals

www.living-stones-memorial.co.uk

Monthly USA Memorial Ritual Last Sunday of each month

Place: Temple of the Living Stones Memorial: www.living-stones-memorial.co.uk

Room password: memorial

Time: 9pm EST

Monthly UK Memorial Ritual Last Monday of each month

Place: Temple of the Living Stones Memorial: www.living-stones-memorial.co.uk

Room password: memorial

Time: 9pm BST

To request a memorial ritual or to have a loved one included in ritual email:

memorial-request@living-stones-memorial.co.uk phone: +44 7528 092692

Isis Temple

<http://isistemple.co.uk>

Monthly Isis Ritual Every first Tuesday of the Month this month: 7 July

Place: Temple of Isis Ritual Room: www.isistemple.co.uk

Room password: Isis

Time: 9pm UK/BST and again at 9pm USA/EST

For more information please email: information@isistemple.co.uk or phone: +44 7528 092692

Shrine of Serenity

<http://www.shrineofserenity.bravehost.com/index.html> U

Healing Rituals Date: last Thursday of the month Time: 9pmK (BST) Place:

<http://www.shrineofserenity.bravehost.com/chat.html>

Full Moon Rituals on the Date, Time: 7PM GMT

Place: <http://www.shrineofserenity.bravehost.com/chat.html>

For more information please contact the Shrine: shrineofserenity@hotmail.co.uk

**For inclusion in the Healing Rituals please contact Rev. Silver- Moonblossom:
rev.silvermoonblossom@hotmail.com**

Animal Shrine of Sothistar Animal Healing Rituals

Rituals are held on the first quarter of the moon, at 9pm UK time.

Requests for animal healing and/or to join the Shrine and group may be sent to me at coatimundi@btinternet.com

**For more information about the Shrine of Sothistar and online rituals please contact
Rev. Mehitabel coatimundi@btinternet.com**

Hall of the Ancestors Formal Healing Shrine

<http://halloftheancestors.bravehost.com>

A monthly Healing Ritual will be held in the webpage chatroom. This ritual benefits all whom request healing energies for friends and families. Another benefit is assisting with healing Mother Earth. Find the ritual chat room through the website above.

Healing Rituals held every 2nd Thursday of the month at 8PM EST.

**Contact Rev. Lee for any questions or to add names to the monthly healing list:
correllianpriest@yahoo.com**

Healing Shrine Yahoo group: http://groups.yahoo.com/group/HOA_healing/

Services Provided by Temples, Shrines, Orders & Correllian Study Groups

Temple Services

Our Lady of the Sylvan Wood Temple <http://olswtemple.bravehost.com/>

Accepting new memberships for both Local Membership, if you live any where within 150 miles of New Boston, Texas - including Northeastern Texas, Southwestern Arkansas, Northwestern Louisiana, and Southeastern Oklahoma, and to Distance Membership, defined as residing any where on planet Earth...

Our Lady of the Sylvan Wood Temple offers Clergy Initiations and Ordinations within the Correllian Nativist Tradition.

Clan of Kheper Temple (Cape Town - South Africa)

On-going correspondence and real-time basic Wicca and Correllian Degree courses

Priesthood Training

All rites of passage

Legal Handfastings (Civil Unions)

Inner and Outer Court Applications

Clergy Initiations

Correllian patches and stoles available locally

New members welcome

Visit our Website: <http://www.clanofkheper temple.co.za>

Temple of Our Lady of the Sacred Earth

Temple of Our Lady of the Sacred Earth (no web page at current)

Golden Valley, Arizona

(928) 208-4161 (Leave Message)

Classes, Rituals, Socials, Rites of Passage

For more details and Information contact Rev. Isarma: ladyisarma@gmail.com

Temple of the 8 Festivals

[http:// templeofthesabbats.co.uk](http://templeofthesabbats.co.uk)

Online Sabbat rituals and Sabbat information

Online Sabbat Rituals in the Ritual Room: www.templeofthesabbats.co.uk

9pm UK and 9pm EST

Temple of the Moon

[http:// templeofthemoon.co.uk](http://templeofthemoon.co.uk)

Full & New Moon online rituals and moon information

Esbat Rituals in the Ritual Room: www.templeofthemoon.co.uk

9pm UK and 9pm EST

Temple of Sedna Suffolk UK
www.sednatemple.co.uk

- **1st 2nd and 3rd Degree Clergy Applications**

Please go to www.sednatemple.co.uk for all applications or alternatively apply on the correllian.com web site. Requirements for application:

1. Mentor Recommendation
2. Bio
3. Two forms of ID one with a photo for 1st Degree only
4. Clergy Fee £27

Degree patches and manuals available

- **Temple courses:**

Online Ritual workshop: Free

Goddess Sedna: Free

Goddess Isis: Free

Rites of Passage online course: fee £7.50

1st Degree Correllian Wicca and associated courses: £10

2nd Degree of Correllian Wicca and associated courses: £10

3rd Degree of Correllian Wicca and associated courses: £10

- **Free Online Classes:**

Runes, automatic writing, past life exploration, Celtic & Egyptian Divination.

Free Support Groups:

Psychic support, empathy support and disability and illness support. Eating disorders support.

For more information please go to www.sednatemple.co.uk Or email: information@sednatemple.co.uk

For information on anything provided by Sedna Temple please email: information@sednatemple.co.uk or phone: +44 7528 092692

Living Stones Memorial Temple & War Memorial

www.living-stones-memorial.co.uk

- **Permanent online Memorial Stones for your Loved Ones beyond the veil**
- **Light a permanent candle for 'Remembrance'**
- **Book of Remembrance**
- **Monthly Online memorial rituals**
-

To request a memorial ritual contact the Temple:

memorial-request@living-stones-memorial.co.uk or phone: +44 7528 092692

Monthly Memorial Rituals:

- Last Sunday in the month 9pm EST
- Last Monday in the month 9pm UK [BST/GMT]

Place: Living Stones Memorial Temple. Ritual Room: www.living-stones-memorial.co.uk

Forum: <http://uk.groups.yahoo.com/group/LSMemorial/>

All Living Stones services are free to the Correllian Membership.

Rainbow Bridge Temple, Pet Memorial:

<http://therainbowbridge.co.uk>

For all your pet memorial needs:

- Permanent Memorials
- Candles
- Inclusions in Rituals for Pets
- Special Ritual requests

Healing Temple

www.healing-temple.co.uk

Incorporating the Distance Healing Network

Weekly Healing Rituals

- Day: Friday
- Times:
 1. 9pm UK
 2. 9pm EST.
 3. Australian East Coast 7pm.

Please go to the web site www.healing-temple.co.uk to request:

- Healing
- Candles

Distance Healing Network through the Healing Temple

Provides healers on a permanent basis to send all types of healing on request: send your healing requests to *Ist.Healing@googlemail.com*

Healing for: All your loved ones and friends family, Pets, Countries, Animals, Gaia, Earth.

If you would like to help with Distance Healing please join the Healing Group, Reiki, Spiritual, Prayer, all types of healers are needed:

<http://health.groups.yahoo.com/group/DistanceHealingNetwork/>

Gaia Healing Temple

www.gaiathealing.co.uk

Information on all aspects of conservation, pollution etc. and the state of the Earth

Healing for Gaia Rituals:

- Every 3rd Tuesday in the Month
- 9pm UK
- 9pm EST

Healing Gaia Temple Ritual room: www.gaiathealing.co.uk

Request a healing for Gaia and her flora a fauna: requests@gaiathealing.co.uk

Proto Temple Services

Shrine of Serenity Proto Temple

<http://www.shrineofserenity.bravehost.com/index.html>

Healing Rituals Date: last Thursday of the month Time: 9pmK (BST)

Place: <http://www.shrineofserenity.bravehost.com/chat.html>

Full Moon Rituals on the Date, Time: 7PM GMT

Place: <http://www.shrineofserenity.bravehost.com/chat.html>

For more information please contact the Shrine: shrineofserenity@hotmail.co.uk

For inclusion in the Healing Rituals please contact Rev. Silver- Moonblossom:

rev.silvermoonblossom@hotmail.com

Hall of the Ancestors Proto-Temple

<http://halloftheancestors.bravehost.com>

Accepting memberships for Outer Court.

Local membership: available to individuals living within 40 miles of Glen Burnie, MD.

Distance memberships are available to the entire World.

We provide online and offline rituals for all of the Sabbats, please check the main webpage for future dates.

Classes held include Meditation Made Simple, Usui Reiki, Wicca 101, Wisdom within Words, and the Correllian Nativist First Degree.

Contact Rev. Lee for more details: correllianpriest@yahoo.com

Proto-Temple Yahoo group: <http://groups.yahoo.com/group/toancestors>

Animal Shrine of Sothistar Proto Temple

Animal Healing Rituals

Rituals are held on the **first quarter of the moon, at 9pm UK time.**

Requests for animal healing and/or to join the Shrine and group may be sent to me at coatimundi@btinternet.com

For more information about the Shrine of Sothistar and online rituals please contact Rev. Mehitabel coatimundi@btinternet.com

Spiral Light Proto-Temple www.spirallight.org

PO Box 405, Groton, Connecticut, 06340 USA

1-860-449-1207

Ext 0 for General Information

Ext 3 for Public Relations

Check out our Yahoo! Group - http://groups.yahoo.com/group/Spiral_Light/

We host public rituals for all 8 Sabbats, monthly group get-togethers, day trips, and public information sessions. We also provide live study groups and online support for members joining the Outer Court and studying for their First Degree. Watch our online outlets for classes that will be launched in the coming year!

July Events

Sunday, August 2, 2009

Public Lammas Ritual

Shelton, CT

12 noon to gather, Ritual to start at 1pm

Come and celebrate the First Harvest with us!

Please RSVP at info@spirallight.org

Formal Shrines Services

Shrine of Reiki

<http://sednareikishrine.bravehost.com>

Come and learn Usui Reiki. Become a reiki Master and teach through your own group for the Order of Reiki. E-group: Sedna_Reiki-Healing@yahoogroups.com

Prison Ministry Formal Shrine

The Prison Ministry Formal Shrine is to function as a bridge to breach the gap between inmates that are still called by Deity and who want to learn and/or correspond with members of the Correllian Tradition. This is a dedicated group that will not judge others' past, but help them pave a way into their future growth.

If you are interested in or already assisting with any type of Prison Ministry, please consider joining. You are required to be a registered member of the Correllian Nativist Tradition and at least 21 years of age. I am looking for people to assist with correspondence, and possible mentoring of inmates. If interested, please sign up at the following group:

http://groups.yahoo.com/group/CNT_Prison_Ministry/

Contact Rev. Lee for more information: correllianpriest@yahoo.com

Personal Shrine Services

No services listed at this time

Order Services

The World Wide Crystal Web Monthly Ritual

The World Wide Crystal Web Club monthly ritual on the 11th of each month (Time you do the Ritual is up to you as long as it is done on the 11th.) The Ritual is for Hope, Peace, Love and Prosperity. The energy sent out through the Web is for anyone to use through out the world if they so desire. Ritual and instructions are in the file section of each group

The Order of Reiki:

www.reikiorder.co.uk

The Order of Reiki takes healing requests. Please go to the Order web site and fill in the healing request form. Or email: healing@reikiorder.co.uk If you are a Reiki Master/Teacher and would like to teach your discipline through the Order please contact Lady Anna: membership@reikiorder.co.uk

Alternatively go to the web site www.reikiorder.co.uk

List of Reiki Teaching Groups

Path of Reiki Energy Formal Shrine :

http://groups.yahoo.com/group/Path_of_Reiki_Energy/

Shrine of Reiki Healing Formal Shrine :

http://groups.yahoo.com/group/Sedna_Reiki-Healing/

Silver-Moonblossoms's Usui Reiki group:

http://health.groups.yahoo.com/group/COR_Silver-Moonblossom/

Katherina's Usui Reiki group:

http://health.groups.yahoo.com/group/COR_Katherina/

Motoki's Usui Reiki group:

<http://health.groups.yahoo.com/group/CORMotokima/>

Ing's Usui Reiki group:

<http://health.groups.yahoo.com/group/CORIng/>

Nikki 2

http://health.groups.yahoo.com/group/COR_Nikki_2/

Mehitabel's Usui Reiki group:

<http://health.groups.yahoo.com/group/CORMehitabel/>

Lee's Celtic Reiki group:

<http://health.groups.yahoo.com/group/CORLeeCeltic/>

Lee's Elemental Reiki group:

<http://health.groups.yahoo.com/group/CORLeeElemental/>

Nikki's Usui:

http://health.groups.yahoo.com/group/COR_Nikki/

Aleta's Usui Reiki group:

http://uk.groups.yahoo.com/group/COR_Aleta/

Brian's Reiki Grove:

http://health.groups.yahoo.com/group/COR_ReikiGrove/

Gloria Gypsy's Complete Usui Reiki Course:

http://uk.groups.yahoo.com/group/COR_Complete-UsuiReikiCourse/

If you are not sure which group to apply to, please go to the Order of Reiki web site and check out the Reiki Teachers bio pages. www.reikiorder.co.uk

Order of Self Empowerment:

<http://groups.yahoo.com/group/OrderOfSelfEmpowerment>

This Order is for all members of the Correllian Tradition who have or are suffering domestic abuse.

We are open to both male and female members. A place for moral support, information on where to find help and a place to discuss your predicament with those who have suffered the same. Please contact either Lady Karla: karlahps@gmail.com or Lady Anna: anna@correlliantemplesuk.com

Order of Spiritual Advisors

<http://spiritualadvisors.bravehost.com>

Closed Order membership by invitation only.

If you need spiritual advice please go to the web site and submit a request for help form.

Order of Bast

Cat order: www.bastis.co.uk

Information and online rituals for all cat and dog lovers.

Pet memorials in the Online Rainbow Bridge Memorial.

For all information on the Order of Bast and the Order of Sirius please contact Lady Anna: anna@correlliantemplesuk.com

Order of Sirius

Dog order www.sepdet.co.uk

Information and online rituals for all cat and dog lovers.

Pet memorials in the Online Rainbow Bridge Memorial.

For all information on the Order of Bast and the Order of Sirius please contact Lady Anna: anna@correlliantemplesuk.com

I KNEW YOU WHEN

This is a closed group, members must belong to the Correllian Tradition either Inner or Outer Court. This group is for friends, families, partners of love ones who are addicted to either alcohol or drug abuse or both, or who have been addicted who are in recovery or thinking about going into recovery. You can contact Windy at windy0716@aol.com

ORDER_HOUSE OF SURVIVORS

This is a closed Order members must belong to the Correllian Tradition either Inner or Outer Court. This group is for women 18 and over who have been victims of domestic or sexual abuse or both. A place to talk to others who have gone through this kind of assault.

If you have questions please contact Windy at windy0716@aol.com

Order of Recovering Correllians

This is a closed Order members must belong to the Correllian Tradition either Inner or Outer Court. Actively working towards recovery from addiction to alcohol and/or drugs. There is no minimum time in recovery to be a member of this order; only an honest desire to become 'clean and sober'. You can contact Windy at windy0716@aol.com

Order of the Magic Quill

The Order of the Magic Quill providing Pagan and Wiccan literature for children, resources, where to find literature and any literature that the members would like to contribute for Pagan children.

Parents egroup: <http://uk.groups.yahoo.com/group/magicquillparent/>

Parents and children egroup: <http://uk.groups.yahoo.com/group/orderofthemagickquill/>

This Group is for members of The Order of the Magick Quill and their children, here the children can access material, and post to other Correllian Children.

Please be aware should you wish your child to be a member of the sub-group Order of the Magick Quill, then you, yourself first must be, and must remain for the duration of their membership, a member of the parents group.

Both groups will be strictly monitored and the children's group will be moderated at all times.

Order of Divination

divinationorder.co.uk

Order Egroup: <http://uk.groups.yahoo.com/group/DivinationOrder/>

The Order of Divination for discussion and teaching of different divinations we also provide a number of different groups specializing in aspects of divinations:

Tarot: <http://groups.yahoo.com/group/DivinationOrderTarot/>

Astrology: <http://groups.yahoo.com/group/DivinationOrderAstrology/>

I Ching: <http://uk.groups.yahoo.com/group/DivinationOrderYi-Jing/>

Automatic Writing: <http://uk.groups.yahoo.com/group/DivinationOrderAutomatic-Writing/>

Celtic & Egyptian Divination: <http://groups.yahoo.com/group/CelticEgyptianDivination/>

Runes: <http://groups.yahoo.com/group/DivinationOrderRunes>

Scrying: <http://groups.yahoo.com/group/DivinationOrderScrying/>

Numerology: <http://groups.yahoo.com/group/DivinationOrderNumer>

Please see the Order's web page for a full list of current divination methods:

divinationorder.co.uk

THE ORDER OF WEB WEAVERS CRYSTAL WEB MAPPING PROJECT

The Order of the Web Weavers has been working diligently on mapping the Crystal Web. If any of you have a crystal that you have added or removed from the Crystal Web contact us to ensure are records up to date and accurate.

The information we need in order to best catalogue your crystal/s is the following. Your Craft Name and E-mail Address along with your City, State, Country, Latitude, and Longitude. Sent to the following e-mail address: wwcw@correllianorders.info

Please include the above information, if you have removed your crystal from the Crystal Web along with 'Remove' in the subject line. If you have added several crystals then we would need a separate entry for each crystal, unless they are located together. If they are located together then please include how many crystals are at that location.

We are excited about this project and hope that you will be too. Once the crystals have been properly catalogued we can then begin placing them on the map program. This will give us a good visualization on the Crystal Web. Thank you in advance for your participation in this wonderful project.

Bright Blessings,
The Order of Web Weavers

THE ORDER OF WORLD WALKERS

This Correllian order is headed by the Rev. Krystel High Correll and she is offering training for those who wish to join the order. The training consists of twelve lessons, one a month, for a year, offered through e-mail.

The purpose of this order is to fulfill the deeper purposes of the Correllian Tradition--advanced psychic and spiritual work, primarily conducted on multi-dimensional levels. This work includes:

Learning to connect and work with your spirit guides. Conscious dying and conscious incarnation. Advanced dream work. Exploring the known boundaries of the multi-dimensional universe, then conducting independent work to go beyond those boundaries. The study of time and advanced work within it. Soul rescue (helping those who are not aware they have died, or are not willing to cross over). Mediumship (being a voice for the so-called dead, visiting the land of the dead and communicating with them, and building a pathway between the living and the dead). Healing, both personal and of our Earth.

These purposes are divided among five houses that consist of the members who are dedicated to the work of the House.

The Order of World Walkers is a working order. The training is only the beginning. Each of the houses offer work that can be done for the rest of your life, if you choose to do it. I believe that everyone who chooses to become a member of the order chose this before coming into this life time to continue work begun in other lives.

For more in-depth information, including the cost of the lessons, contact me at krystelneuman@yahoo.com

May You Blessed Be
Krystel

Correllian Award Orders

Orders which are awarded only rarely and in recognition of extreme accomplishment

The Order of Orpheus: The Order of Orpheus is awarded to people in recognition of outstanding services to the Correllian Tradition.

The Order of the Round Table: The Order of the Round Table is awarded to people in recognition of outstanding services to the Pagan community.

The Order of Tsalv: The Order of Tsalv (Selu) is awarded to people in recognition of outstanding services the cause of peace in the world.

In addition to the above Orders which are awarded only rarely and in recognition of extreme accomplishments, we have also Meritorious Orders awarded twice yearly at the Lustrations, to recognize the work and achievements which keep our Tradition running on a daily basis.

Meritorious Orders

The Order of the Copper Athame: The Order of the Copper Athame is awarded for outstanding service in the field of the occult or mundane Sciences.

The Order of the Golden Wand: The Order of the Golden Wand is awarded for outstanding service in the field of Service to Others.

The Order of the Silver Chalice: The Order of the Silver Chalice is awarded for outstanding service in the field of the Arts.

The Order of the Iron Pentacle: The Order of the Iron Pentacle is awarded for outstanding service in the field of teaching.

The Order of the Thurible: The Order of the Thurible is awarded for outstanding service in the field of Spirituality.

For more information on all Correllian Orders please go to: <http://www.correllian.com/Orders.htm>

Faces of Correllianism

<http://www.correllian.com/faces.htm>

“Faces of Correllianism” is a place where Correllians can send photos of themselves, their altars, their pets, as well as artwork, autobiographies, descriptions of events and projects, essays and poetry to share with all Correllians.

Through “Faces of Correllianism” we hope to show what a strong, diverse, and positive community we are.

If you would like to have your photo, writing, or artwork included, please email it to me at DonLewisHP@aol.com together with your authorization to use it at www.correllian.com You will of course retain any copyright. Please do not send us anything that is copyrighted to anyone other than yourself, unless you include their permission.

Correllian Calendar

<http://www.correllian.com/calendar.htm>

All tradition events can be found in the Correllian Calendar including birthdays of Tradition members.

Adventures

<http://www.correllian.com/adventures.htm>

Check out the adventures page on Correllian.com and find out what other Correllians have been doing

Symbols & Robes

<http://www.correllian.com/symbolsandrobes.htm>

Explanations of some of the symbols and robes used by the Correllian Tradition

Correllian E-groups

Clergy & Mentors

Correllian Outer Court: <http://groups.yahoo.com/group/CNT-outercourt/>

Correllian Clergy: <http://groups.yahoo.com/group/CorrellianClergy/>

Correllian Clergy Mentors: <http://groups.yahoo.com/group/CorrellianClergyMentors/>

Countries & Languages

Correllian Wicca Africa: <http://groups.yahoo.com/group/CW-Africa/>

Correllian Wicca Australasia: <http://uk.groups.yahoo.com/group/CW-AU/>

Correllian Wicca Austria: <http://groups.yahoo.com/group/CW-Austria/>

Correllian Wicca Belgium: <http://groups.yahoo.com/group/CW-Belgium/>

Correllian Wicca Brazil: <http://groups.yahoo.com/group/CW-Brazil/>

Correllian Wicca EU: <http://uk.groups.yahoo.com/group/CW-EU/>

Correllian Wicca French Language: <http://groups.yahoo.com/group/CW-Francais/>

Correllian Wicca German Language: <http://groups.yahoo.com/group/CW-German/>

Correllian Wicca Greek Language: <http://groups.yahoo.com/group/CW-Greece/>

Correllian Wicca India: <http://groups.yahoo.com/group/CW-India/>

Correllian Wicca Ireland: <http://groups.yahoo.com/group/CW-Ireland/>

Correllian Wicca Netherlands: <http://groups.yahoo.com/group/CW-Netherlands/>

Correllian Wicca Norway: <http://groups.yahoo.com/group/CW-Norge/>

Correllian Wicca Portuguese Language: <http://groups.yahoo.com/group/CW-Potuguese/>

Correllian Wicca Southern Hemisphere: <http://groups.yahoo.com/group/CW-SouthernHemisphere/>

Correllian Wicca Spanish Language: <http://groups.yahoo.com/group/CW-Espanol/>

Correllian Wicca Sweden: <http://groups.yahoo.com/group/CW-Sweden/>

Correllian Wicca Switzerland: <http://groups.yahoo.com/group/CW-Switzerland/>

Correllian Wicca UK: http://groups.yahoo.com/group/correllian_wicca_uk/

Correllian Wicca World: <http://groups.yahoo.com/group/correllianworld/>

Subjects

Deities & Celebrations: <http://groups.yahoo.com/group/DeitiesCelebrations/>

Geomancy: <http://uk.groups.yahoo.com/group/Sedna-Geomancy/>

Past Life Exploration: <http://uk.groups.yahoo.com/group/PastLifeExploration/>

Poetry: http://groups.yahoo.com/group/Isis_Wiccan_PoetryGroup/

Ritual Writing: <http://uk.groups.yahoo.com/group/RitualWriting/>

Runes: <http://uk.groups.yahoo.com/group/SednaRunes/>

Politics: <http://groups.yahoo.com/group/DailyPolitics/>

Online Ritual Workshop: <http://groups.yahoo.com/group/Ritual-Classes/>

Support & Healing Groups

Disability & Illness Support: <http://uk.groups.yahoo.com/group/Correllian-Support/>

Empath Support: <http://uk.groups.yahoo.com/group/EmpathSupport/>

Eating Disorders Support: http://uk.groups.yahoo.com/group/EatingDisorders_Support/

Past Life Exploration: <http://uk.groups.yahoo.com/group/PastLifeExploration/>

Sexually Abused Male Support: <http://groups.yahoo.com/group/fraternityofhorus/>

Temples/Shrines

Correllian Temple Heads: <http://groups.yahoo.com/group/CorrellianTemple/>

Correllian Formal Shrine: <http://groups.yahoo.com/group/FormalShrineHeads/>

Correllian Personal Shrines: <http://groups.yahoo.com/group/shrines/>

Orders

Correllian Order Heads: <http://groups.yahoo.com/group/CorrellianOrders/>

Order of Bards: <http://groups.yahoo.com/group/OrderOfBards/>

Order of Bast: <http://uk.groups.yahoo.com/group/Order-of-Bast>
Order of Buddhist Wiccans:
http://groups.yahoo.com/group/Correllian_Order_Of_Buddhist_Wiccans/
Order of German Shepherds: <http://uk.groups.yahoo.com/group/orderofgermanshepherds>
Order of Hawthorn: <http://groups.yahoo.com/group/orderofhawthorn>
Order of Herbal Healers: <http://groups.yahoo.com/group/CTHO>
Order of Krystal Guardians: http://groups.yahoo.com/group/Order_of_Krystal_Guardians/
Order of the Open Door: <http://groups.yahoo.com/group/Orderoftheopendoor/>
Order of Recreational Fantasy Connoisseurs:
http://games.groups.yahoo.com/group/Order_of_RFC/
Order of Reiki: <http://health.groups.yahoo.com/group/Order-of-Reiki/>
Order of Self Empowerment: <http://groups.yahoo.com/group/OrderOfSelfEmpowerment>
Order of Self Reliant Living: <http://groups.yahoo.com/group/orderofselfreliantliving/>
Order of Sirius: <http://uk.groups.yahoo.com/group/OrderOfSirius/>
Order of Tcheft: <http://groups.yahoo.com/group/order-of-tcheft/>
Order of The Eagle: <http://groups.yahoo.com/group/Order-of-the-Eagle/messages/1>
Order of The Muses: <http://groups.yahoo.com/group/OrderOfTheMuses>
Order of Web Weavers: TheOrderofWebWeavers@yahoo.com
Order of Wolves: <http://uk.groups.yahoo.com/group/orderofwolves>

Study Groups

Correllian Study Group Keepers: http://uk.groups.yahoo.com/group/ws_eu_students/
Clan of Tetu Study Group: <http://www.correllian.com/studygroups.htm>
Loki's First Degree Students: http://groups.yahoo.com/group/Students_of_Loki/

For Children & Parents

Order of the Magic Quill:
Parents egroup: <http://uk.groups.yahoo.com/group/magicquillparent/>
Parents and children egroup:
<http://uk.groups.yahoo.com/group/orderofthemagickquill/>

Other Groups

Correllian Social Club: <http://groups.yahoo.com/group/CorrellianSocialClub/>
CorrellianHouseofWisdom_Elder_Sage_Crone:
http://groups.yahoo.com/group/Correllian_HouseofWisdom_Elder_Sage_Crone/
Witan Council: <http://groups.yahoo.com/group/WitanCouncil/>
Witan Heralds Court: <http://groups.yahoo.com/group/WitanHeraldsCourt/>
Kindred Spirits: <http://groups.yahoo.com/group/correlliankindredspirits/>

If you have a group you would like to add to the list please contact the editor
[**heraldeditor@googlemail.com**](mailto:heraldeditor@googlemail.com)

Other Correllian Publications

The Correllian Times

The magazine for the Correllian people!

Subscribe to the Correllian Times

A special E-list has been established for the Correllian Times.
http://groups.yahoo.com/group/the_Correllian_Times_magazine

The Correllian Times magazine is now available by subscription. Excerpts from the magazine are available free of charge in the above e-list. Featuring articles, reports on events, photos, artwork, poetry, and more! For subscriptions and submission for the Correllian Times please contact Lady Windy windy0716@aol.com

The Correllian Times E-Magazine is a free publication, we are offering space for you to advertise your goods and services at a low price.

Rates:

Banner..... \$10.00 a month

Text box.....\$10.00 a month, **50 Word Maximum**

Banner & text.....\$15.00 a month

Banner.....\$100.00 yearly

Text.....\$100.00 yearly

Banner & Text.....\$150.00 yearly

You can send your ad to: Windy0716@aol.com

Go to correllian.com ,then click on Correllian Times Go to bottom and the payment options are there including where to send a check if you prefer that.

You can read the Correllian Times E-Magazines at: www.correllian.com or

http://groups.yahoo.com/group/CNT_CORRELIAN_TIMES_E-MAGAZINE_ISSUES

Correllian Herald Subscriptions

Subscribe to the Correllian Herald: CorrellianHerald-subscribe@yahoogroups.co.uk

E-group: <http://uk.groups.yahoo.com/group/CorrellianHerald/>

The Correllian Herald is best viewed in PDF Format:

CorrellianHerald-pdf-subscribe@yahoogroups.com

E-group: <http://groups.yahoo.com/group/CorrellianHerald-pdf/>

Managing Editor: Rev. Anna Rowe HPs

Co-Editor Rev. Nehal

Sub-Editor Rev. Andi

Today's writers and articles sourced by:

Rev. Mehitabel,

Rev. Leona,

Rev. Nehal

Rev. Anna

Poetry provided by the Order of Bards

Reminder: You are responsible for all submissions please ensure that all links are working the staff of the Correllian Herald do not check for working links.

Disclaimer: Any views expressed within the articles in this publication are not necessarily the views of the Correllian Tradition the Correllian Herald Publication or the Correllian Herald Editors.

Send your adverts, articles and inclusions to: heraldeditor@googlemail.com

If you would like to write articles or be an online reporter for the Herald please contact the Herald editor: heraldeditor@googlemail.com

© Correllian Herald Publications 2007-2009