

Correllian Herald

Est. 2007

Correllian Herald November 2021

Issued on first Monday of the month

- **Witches of British Folklore**
- **Tarot of the Month**
- **Crafting with Bella**
- **Qilin – Sacred Animal of China**
- **Rune of the Month**
- **Wolfciaara's Wiccan World**
- **Temple of Contemplation**
- **School of Reiki**
- **Word Scramble**
- **Identify the Sigil**
- **Distance Healing Network**
- **Word Search**
- **Calling All Bards**
- **Order of Divination - Bibliomancy**
- **Crossword**
- **Answers to Last Month's Puzzles**
- **Online Rituals**
- **Chartered Listings and Newly Chartered Bodies**
- **Correllian Membership Groups**

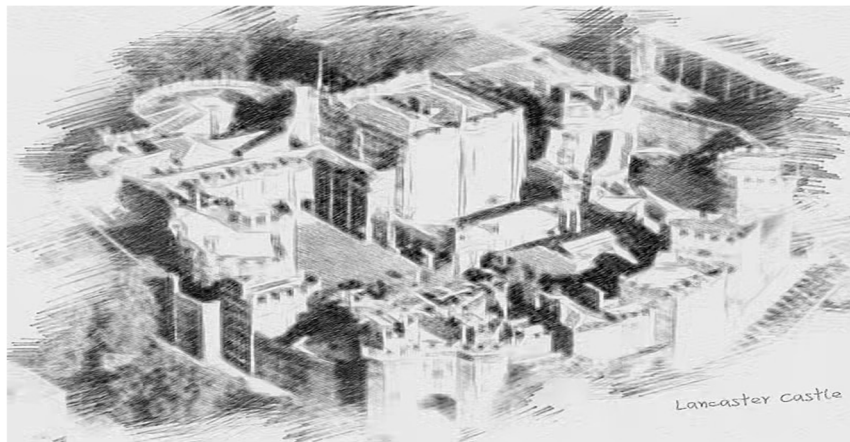
Witches of British Folklore

By Rev. WinterGhost

The UK has a long history of witchcraft dating back to, sometimes colourful, most times dark and gruesome. From this history the inevitable folk tales and legends are born, told alongside, or even evolving from, true events. In this new series each month I will look at historical events as well as legends that have defined the image of historical witchcraft in the minds of the people of the UK today.

The Witches of Pendle: #2

Lancaster has a long and dark history and Lancaster Castle was still used as a prison until 2011, 399 years after its most famous occupants were there. Lancaster, in fact, hanged the most people in England, second only to London, earning it the moniker "Hanging Town."



For many years prior to the trials, Elizabeth Southern, also known as 'Demdike,' was considered a witch by many in her community. She lived with her daughter, Elizabeth Device, and Elizabeth's children, James, Alizon, and Jennet. The family as a whole believed in magic and their abilities to use it.

The term 'witch' didn't always mean 'evil,' and could often be used interchangeably as a term for a healer or wise woman, and though Demdike and her family had previously been accused of casting curses from upon their neighbours, it was an event in March 1612 that caught the attention of Pendle's justice of the peace, Robert Nowell. The family's fate was sealed.

On March 21, 1612, Alizon Device, Demdike's older granddaughter, was on her way to Trawden Forest when she met a pedlar, John Law and his son Abraham. Alizon asked John for some pins, but metal pins were often associated with witchcraft in the 17th century, so he refused to sell them to her. Alizon cursed the pedlar before they parted ways, only to see him stumble and fall moments later. Most historians believed that John Law suffered a stroke as a result of his exchange with Alizon, an unfortunate coincidence for her.

Alizon was so convinced of her own abilities, and so filled with guilt for what had happened, that she accompanied Abraham Law to his father's bedside to beg his forgiveness and to try to reverse the curse she believed she had placed on him. Her belief in her own ability to cause harm to others through witchcraft amounted to an admission of guilt, and it was this that resulted in Alizon, Elizabeth, and James Device to appear before Robert Nowell on March 30, 1612.



Influenced by James I's anti-Catholicism and the north of England's preference for the "old ways," every Justice of the Peace in Lancashire was ordered to compile/draw up a list of recusants in the area. When a guilt-ridden Alizon Device admitted to selling her soul to the Devil and ordered him to lame John Law, Nowell had the juiciest case of his career on his hands. He knew a successful series of witch trials and executions would make him extremely popular in the eyes of the king. Things looked bleak indeed for the Devices.....

To be continued December 2021.

Tarot of the Month

by Lady WolfCiara



27 – Nelys the Achemist

This tarot-card at interpretation means: For the coming month, we are experience a time of self-reflection and ability to see with one's third eye. Our mind is open to new things and we get the time to stop and pause in what's happening around us. When we have gone through such alchemical process, we can never go back to what we were before – which is probably just as well.

Prediction for November 2021

This month, one will grow both inwards and outwards. Help will come, and from places you not are expecting to come from. You will look as it is going sideways and backwards, although so is not the case, for the coming month. Buckle up, and take a good period of new things happening, mostly in positive outcome...

Tarotdeck

Faries Oracle Deck by Brian Froud

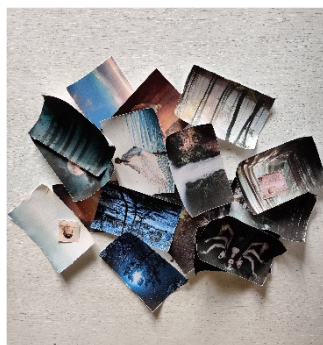
Crafting with Bella

By Rev. Bella

Christmas gifts 2021

Every Christmas, I make some wonderful things to give away to friends and family. Some of the previous things are wishing jars, fairy houses, oracle decks, moon goddess dolls, tarot spreads and personalised sigils. Later on I will show it all.

This year I want to make something easy and it will be the same for every person. I have gathered all the items to make small landscape boxes. Every box will be different as each person is unique and the box will match their personality or their wiccan beliefs.



I will glue the pictures to the lid and bottom and decorate with moss, flowers, fake snow, stones, branches, charms and glitter. I'll also drill holes in the lid so it can hang on the wall.

I think everyone will love to get one ❤️

My Planner

Every year, I choose a new planner for next year. The one I have now is a 9 ring medium size Happy Planner but it's just too big. And the 7 ring mini Happy Planner is too small.

I decided to make my own 8 ring planner which is a lot of work as I have to make it all from scratch but it's a challenge I'm willing to take to get it exactly right.

I've finished all the weeks and months overview which has to be printed, cut and punched.

I've found cardstock paper for the dividers and month stickers for the tabs. And some pictures to decorate on the dividers. All in colours of black, white, gold and pink.

I also have the Lunar & Seasonal planner from Stacey Demarco which I got for my birthday. I will cut it and punch it to fit my own planner and make it more witchy.



I hope it will end up as beautiful as I imagine.



Qilin – Sacred Animal of China

By Rev. Firefay

A while back I decided to perform a meditation and asked to meet my spirit guides. The first to present himself was tall, slender, androgynous with long jet-black hair and golden eyes. I couldn't really tell if it was a he or a she because there were very feminine features without the roundness of a woman. Either way I was astounded by its beauty. I asked what his/her name was and they said "Kirin". Kirin looked at me as if curious that I decided to come meet him/her but also seemed delighted. I asked Kirin if they had been with me a long time and they said since my birth in the present life. Kirin was accompanied by a little blond girl with skin that glowed like the moon. She seemed rather shy and did not speak during this meeting but frequently peeked at me from behind Kirin's robes. I thanked my guardian spirit and decided to end the meditation. My first thought was Kirin sounded like an Indian name, so I looked it up and found that Kirin is actually the name of a Japanese mythical creature that comes from the Sacred Animal Qilin of China. I decided to call on Kirin once again in a meditation. This time I asked Kirin if he/she could show me their true form. Kirin seemed to question whether it was a good idea and asked, "Are you sure? My true form can be rather overwhelming at times." I told him it was all right and I was not easily frightened. Suddenly in a whirl, Kirin transformed. He had a very furry black head much like a feline with large golden eyes like a cat or dragon. He had horns that joined together on his head and pointed ears that had tufts of fur at the ends. His body was full of black/blue scales that were iridescent and multi-color like labradorite stones, and his legs were like a horse's legs that ended in clawed hooves. The mane and tail were made of a blue electrical fiery substance. He was imposing but magnificent and I felt perfectly safe in his presence. I call him "him" because he has a rather masculine voice, so I figure he is a feminine male. The little girl still seemed shy and not ready to talk so I told Kirin I would visit again soon. I thanked them and left my meditative state.

After that last meeting I decided to research more on Qilin, this mythical animal I had discovered that I had very little knowledge about as it is one of the lesser-known mythical animals. During my research I discovered that it was originally one of 5 mythical animals that represented the five Chinese elements wood, fire, earth, metal and water. The Qilin represents the earth element but was known to use fire to incinerate evil doers. Qilin was often yellow or orange since the earth element in China is represented by these colors. The earth element is also considered the 5th season or interseason that happens during the 2-week transition periods in between each season. Earth is not represented by the north in China but represents the 45-degree angles in between the 4 cardinal directions. Therefore, Earth is northeast, southeast, southwest and northwest. Earth is so important because it nourishes and sustains all terrestrial life being as earth energy is yin and sky energy is yang. Yin is the nourishing energy of the mother whereas yang is the defensive energy of the father.

Europeans have often compared the Qilin to a unicorn because of the similitudes between the two, however their personalities differ quite a bit. Unicorns are said to only present themselves to virgins and are often portrayed as aggressive to others. Qilin is said to present itself to a sage or a wise person or someone who will become a great leader but would never even harm an insect and even walks on summoned clouds in order to not crush even a single blade of grass. Qilin can walk on clouds, water and breath fire if an innocent is threatened. No two qilins are exactly alike which is why representations of this creature vary greatly. One thing we know is that they are the king of all earth walking animals with fur.

This magnificent magical creature is the perfect representation of yin and yang because it is androgynous neither male nor female but having characteristics of both. Qi means male and Lin means female which shows that Qilin was meant to represent balance and harmony just as the symbol yin yang. Earth is the Chinese element of balance as it is present in between all four seasons and is the mother energy. It is from the earth that we are nourished and the food that she gives us allows us to sustain our life energy and protects us from eventual elemental aggressions.

Qilin are very sensitive to justice and always stand up for the innocent. They will harm none except when it is to protect in which case, they have been known to incinerate the wrong-doers. When it comes to assessing someone's nature the Qilin is an expert just by looking at the person in question almost as though they can see the soul of an individual through their eyes. None can fool a Qilin and this creature will only show itself to those worthy and truly pure of heart. When they do decide to reveal themselves, they often bring good luck, prosperity, success, longevity and the list goes on. Individuals visited by this animal are often brilliant and/or wise, have good hearts and sincerely wish to help others. Qilins love peacefulness and do not care for dysfunctional environments. If a person they choose to protect, or follow is in danger or in a bad environment they will help them get out and will defend them if necessary. This creature even has the power of exorcism so no individual under their care can be possessed or approached by evil spirits.

Looking back at my past I realize that it makes perfect sense that Qilin is my spirit guide. From a very young age I was drawn to animals and even wild animals would approach me without fear. I always stood up for the underdogs and those that were being mistreated. Injustice was something I have always despised, and I am incapable of lying or knowingly being unfair to others. I am far from perfect, but those values are something I really take to heart and abide by. My need to help others has always been part of me because somewhere deep inside me I have always known that we are all connected and helping others and making someone smile makes life so much more worth living. Peaceful environments and balance have always been very important for my wellbeing as I do not deal with stress well. When confronted with stressful situations I will find my way out unless I must face the situation to save a life or help an innocent. I have always had trouble looking people in the eye for fear of what I would find. It's as if I'm intruding on the deepest parts of their souls. The first time I meet someone I know immediately whether the person is genuinely good or not as if I have an antenna for detecting that. I have always been rather androgynous as well since I like comfortable loose-fitting clothing, I don't wear makeup or much jewelry and am rather tomboyish. It is a great honor that Qilin has chosen to be my spirit guide and I find myself unworthy of such an honor, but I will do my best to live up to Qilin's expectations and I do sincerely wish to help others and make this world a better place for all of us.

This meditation was not the first time Qilin had revealed himself to me, but it was the first time he did it visually. One time when I was receiving a reiki initiation, I heard rolling thunder as if a storm was coming in just over my head. After the initiation I asked everyone if they had heard the thunder. They all looked puzzled and said they had heard no thunder which made me realize I had heard it in my meditation. Qilins have been known to manipulate fire and lightning and my qilin had electric blue mane and tail that looked very much like lightning.

During my last meditation, Qilin has become more and more eager for my visits and is quite affectionate. The little girl finally decided to speak; she is so small, but I can sense an immense power in her. She told me her name this last time: Ariadne, but that is for another story.

Rune of the Month

By Lady WolfCiara



M - Mannaz – Middle-earth Rune – Ancestor Rune - SELF AWARENESS

This rune at interpretation means: learning; help from others; other people influence the situation, and possibly also offered opportunities; success in tests/examinations; help to take decisions on all matters relating to relationships/family; balanced and integrated; self- awareness; self-knowledge; harmony with itself.

Prediction for November 2021

For the coming month, it will be a positive month, with loads of things happening. Maybe, hard lessons to learn, but in the long run, one will look back and see where the break to better days came.

Wolfciara's Wiccan World



By Lady WolfCiara

Merry meet my fellow Wiccans and Welcome to my little corner of the Wiccan World.

So, yet another month has passed by and with it Samhain/Hallowe'en that came and went. The month has been fairly good with some really nice weather outside and I almost have had a feeling that the late weeks of summer were back before it turns to autumn weather. On that one, there have also been some really chilly days and needed to use a winter-jacket when walking outside.

I Have had a month where I have had a lot of inward growing and I have reflected about me as a person and to re-cap where I am today and what my future will be. Sounds like a small thing, but for me, it's a new chapter, as I have always thought of others before myself and how I should take care of me first. I Have finally, after a really rough year, actually begun to realize that the World is opening up and I can welcome positive winds my way.

I have had a day with my middle brother and his 2 girls (8 and 4 of age), along with my youngest brothers 2 girls (8 and 7 years of age). We enjoyed it very much and had a lot of laughs together. We were mainly outside, as the weather allowed us to be playing outdoors. Bonus is the "fresh" air outside and makes/gives oneself a lot of endorphins which helps for the night-sleep, in the evening.

We have now gone over to winter-time, again, so the already dark evenings, are getting even more darker, also more early in, on the day. Now, one has to look forward to Yule in December, to look forward to have the light come back, again. November is a dark month, in many ways. So, there are some good things with that, as I light candles and tea-lights around the living-room. I think, that when I last counted how many I lit up is about 40, or somewhere in the numbers of that amount. I just love, to light them up, and drink a lot of tea, and talk together without the TV on, and really zone out and be in the now and here.

Take care until next time.

Blessed be all of you.

Love and light, hugz and blessings.

WolfCiara



[The Temple of Contemplation Formal Shrine](#)

The Temple of Contemplation is now offering a monthly “contemplation” for anyone and everyone who wishes to partake. We have had some interesting conversations and contemplations over the last few weeks since the previous edition of the Herald. If any readers out there would like to contribute or have their contemplations published in the next edition, then please feel free to write in – we would love to hear from you about all that you have been contemplating!

Well it is that time of the year again and the Wheel is drawing to a close for those of us in the Northern hemisphere and Samhain seems to be at the forefront of people’s minds at the moment - I know a lot of us here at the Temple of Contemplation are excited by this time of the year and there is a lot of pumpkin carving going off!! Many of us in the Southern Hemisphere are looking towards Beltane and the warming of the summer months ahead and are frantically making plans for what their summer may entail. But North or South, the thoughts and anticipation seem to be on looking forward and what the near future may hold. So as we contemplate, we ask of you- what you are looking towards? Are you planning for the long winter months and if so, what? Have you got exciting summer plans laid out? What is it that you are preparing for at this time of the year? Are you looking back on the Year?

Any thoughts or more feel free to let us know about them.

Beltane and Samhain blessings to you all!

If you wish to share your thoughts and contemplations with us and have them published in the next edition of the Correllian Herald, then please feel free to email them to – heraldeditor@gmail.com - we would love to hear from you!

Also, the Temple of Contemplation holds a monthly online Peace Ritual, as part of the Correllian Global Rolling Peace Prayer, on the second Wednesday of every month. All are welcome to attend to help us send out peace across the globe. For more information please go here - [Peace Page \(correlliantradition.co.uk\)](http://Peace Page (correlliantradition.co.uk))

For more information about online rituals go to - [Temples Ritual \(correlliantradition.co.uk\)](http://Temples Ritual (correlliantradition.co.uk))

Blessings and happy contemplating!



School of Reiki

The School of Reiki now has available places for new students to train in the art of Reiki **FREE OF CHARGE** at the online School - [School of Reiki Class Site](#) – you can sign up and start your training today and become a reiki Master! For more information visit the school website - [School of Reiki](#) – or email admin@schoolofreiki.org

Once again, we give a huge welcome to all of our numerous new students from all of us at the School of Reiki. We hope you are settling in well and enjoying your studies and the new journey you are undertaking. Many of our completed students are now taking advantage of the amazing benefits of registering with the IPHM! We are an IPHM registered trainer and therefore our Students gain certain benefits from being able to register with them once they have completed their studies. To find out more please do contact us.

We would also like to take this opportunity to send our congratulations to the students that have completed and passed their level 1 finals this month. Congratulations and good luck as you embark on your level 2 studies! We have also had student Amy Lee pass their Level 2 finals and are now moving on to their Level 3 studies-good luck to you as you continue on your Reiki journey Amy! We have also had another four level threes complete their finals and passed to become Reiki Masters!! Congratulations to you all!

Well done to those who have become a Reiki Master and that are now registered with the IPHM and become Approved Therapists. We are sure that you will find this truly beneficial to you as we do – very much!!

Blessings

The School of Reiki

Also just a quick reminder that the Order of Reiki holds an online Reiki Healing Session on the third Wednesday of every month [Reiki Rituals \(orderofreiki.org\)](#) and that all students (and our Reiki Teachers!) of the School of Reiki are welcome to attend, as well as members and non-members of the Correllian Order of Reiki. You do not need to be Reiki trained in order to participate. Feel free to come along and pop in and watch.

The School of Reiki is registered as an IPHM Approved Training Provider



IPHM International Practitioners
of Holistic Medicine
APPROVED TRAINING PROVIDER



The Temple of the Moon Word Scramble

1. NEORC _____
2. EWN ONOM _____
3. OAK _____
4. LBEU _____
5. ANDIME _____
6. TTURLINIAYQ _____
7. BACKL NOOM _____
8. ULFL MONO _____
9. MHEROT _____
10. TWRO _____
11. NNIAWG NOOM _____
12. NMEADI _____
13. WLFO _____
14. YBRRRWATES MONO _____
15. RDKA MONO _____
16. IXWGNA _____
17. TESAB _____
18. OMEHTR _____
19. INWNAG _____
20. SGDOSDE _____
21. NOSW MOON _____
22. ODOBL NMOO _____
23. ERHA _____
24. TSRMO NOMO _____

Identify the Sigil

The Correllian Tradition has many Temples, Shrines, Orders and Groups, but how many of them do you know or know any information about them? Each edition of the Correllian Herald shall feature a brief look at a particular Temple, Shrine, or Order, but first you need to identify which one is to be featured!

Well done to all of you who correctly identified the logo of the Order of Bards!



Only a few of you managed this one but this is the new sigil of the Order of Bards. Any budding writers out there are welcome to apply to join the order. We are always looking for new writers! Please feel free to send any writings in to Heraldeditor@gmail.com if you wish for any of your writings to be published in the next edition.

Thank you to all those of you who wrote in and sent copies of your coloured logo and below is a new black and white logo of a particular Temple, Shrine or Order for you to identify and colour in. Name what this logo belongs to! What do you know about this group? And can you colour it in correctly?! Answers will be featured in the next edition



If you have a Temple, Shrine, Order or Group and would like it to be featured here then please email heraldeditor@gmail.com with your logo and brief overview to be featured in the following edition.



[The Healing Temple Distance Healing Network](#)

Due to the demise and closure of the beloved Yahoo Groups, The Healing Temple Distance Healing Network is now having to start again from scratch. We have a brand new shiny io Group and we are currently seeking old members as well as new and additional healers to either join, or re-join, the Distance Healing Network to send out greatly required healing to those out there so desperately in need of healing energies.

You are more than welcome to participate in the weekly rituals if you so wish to. We receive many requests for healing on a weekly basis and would love more participation in sending that much needed healing out; even if it is just by joining our Distance Healing Network and sending out healing when you can.

To join our Distance Healing Network please go to - distancehealingnetwork@groups.io | [Home](#) – and request to join or email Lady Anna: anna@thehealingtemple.org

To make requests for healing please go to - [Healing Request Form \(thehealingtemple.org\)](#)

To join and become a full member of the Healing Temple please go here - [Temple Membership \(thehealingtemple.org\)](#)



Temple of the 8 Festivals Beltane Word Search

H T J E P H I K V S E R D F B W E L L S W A Q N
 W A P X E E M D W C P D E A Z S S E N I P P A H
 F B V U J F A A N N O B M X N S M J Y F B E J B
 L B L Z Y V I A Q G E A Q G S C X Z O E L A U M
 R A P U R N D L D A Y K R E S L I G F S O E C P
 O S S K D N E E L P B X D V E Y S N S T S D Z G
 B D E H U S N T O T M D H Y R N Q Z G I S S M Z
 E N K B X R A L M H O J N W I T D Y P V O N A G
 A A A I O I E X C G F A W L F C L T E A M O Y H
 L R O H N H A N D F A S T I N G S O N L S B Q S
 T G Y E M A Y B A S K E T W O N C S I H M B U U
 E D Y X U C C L N B M C Y Y B K G T A I B I E B
 I C G M F R Y B U A A V Q C E C P K T T F R E Y
 N E M M Z B C F Y N B O A H F N L W L W E A N A
 N Z F E T J A D S D A F B Y E V O O E N A X A M
 E H M A R C A L J L C R J Q P X E H B T S Q D X
 D Y V D J Y D H E C P Y T I L I T R E F T K I X
 O N R O H T W A H F G R O W T H L C O Q I A E A
 G L M C Y H Z R Z M I U R A E H G R E E N M A N
 G K N U J R T Y H T L R I T M A Y E Q F G Z D T
 N S A Q J T U N I O N C E X V X L D D P C O S T
 U H P F L O W E R S C G V S V V Z M A Y W I N E
 O J P Y P V Q F F J D A N N I A T L L A E B K R
 Y H J P O V N I A H M A S T E C P H A L L U S E

Abundance Balefires Bealltainn Bealtaine Bealteinne Beltaine Blossoms Bonfires
Cetsamhain Dancing Feasting Fertility Festival Flowers Goddess Grand Sabbat
Green Man Growth Handfastings Happiness Hawthorn Honey Horned God Life
Lunar Maiden May May Basket May Bush May Day May Pole May Queen
May Wine Mead Oak Phallus Ribbons Union Wells Young God



Order of Bards



CALLING ALL BARDS!

The Order of Bards is looking for writers to feature their works in future editions of the Correllian Herald. So, if any members of the Order of Bards, or any budding writers in general would like to have their work, short stories, poems etc featured then please send your writings to – bards@correlliantradition.co.uk

PLEASE NOTE: All writings MUST be original, and you MUST be the author of any works submitted. We cannot publish any plagiarised or copyrighted works.

A huge thank you to all those that have written in – we have chosen a poem for this edition, although the author never let us know who they are!!

Pumpkin for Samhain

Flickering light,
The coming Dawn.
The dark of night,
The wandering forlorn.
An orange shell,
To protect the flame.
A unique design,
That has no name.
All shapes and sizes
As traditions declare
A way of life
For all to share.
Anon 2021

Thank you so much to the wonderful Bard who created this little beauty just for us! They do not wish to be named but we thought it a great one to share with you all!

Keep on writing and sending your written works in to bards@correlliantradition.co.uk

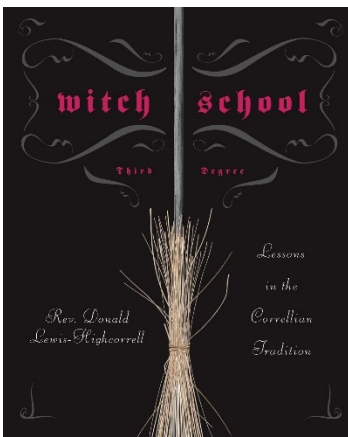


The Order of Divination – Bibliomancy

This month the Order of Divination has been looking at other and lesser known methods of Divination and trying things out. We know not everyone has the necessary tools like Tarot decks and Runes to try things out these things for themselves and we all know expense can play a part in most practices. So we have been looking at forms of divination that anyone can use and would have access to and trying different things out for ourselves. Such as Bibliomancy!

Pretty much everyone has books in their household so we thought it would be a good one to try out. Now most people have a tendency to pass this one by as it is either considered too random, too difficult to interpret and a common misconception that you have to use the Bible to undertake this practice. But we can tell you that you do not! You can use any book you wish and why not?! A lot who use this form of divination tend to use spiritual or sacred books, but we thought we would try it and see for ourselves.

A Third Degree student studying for their Third Degree Final exam decided, seeing as they just happened to have the Third Degree textbook to hand, that they would use this and give it a go!



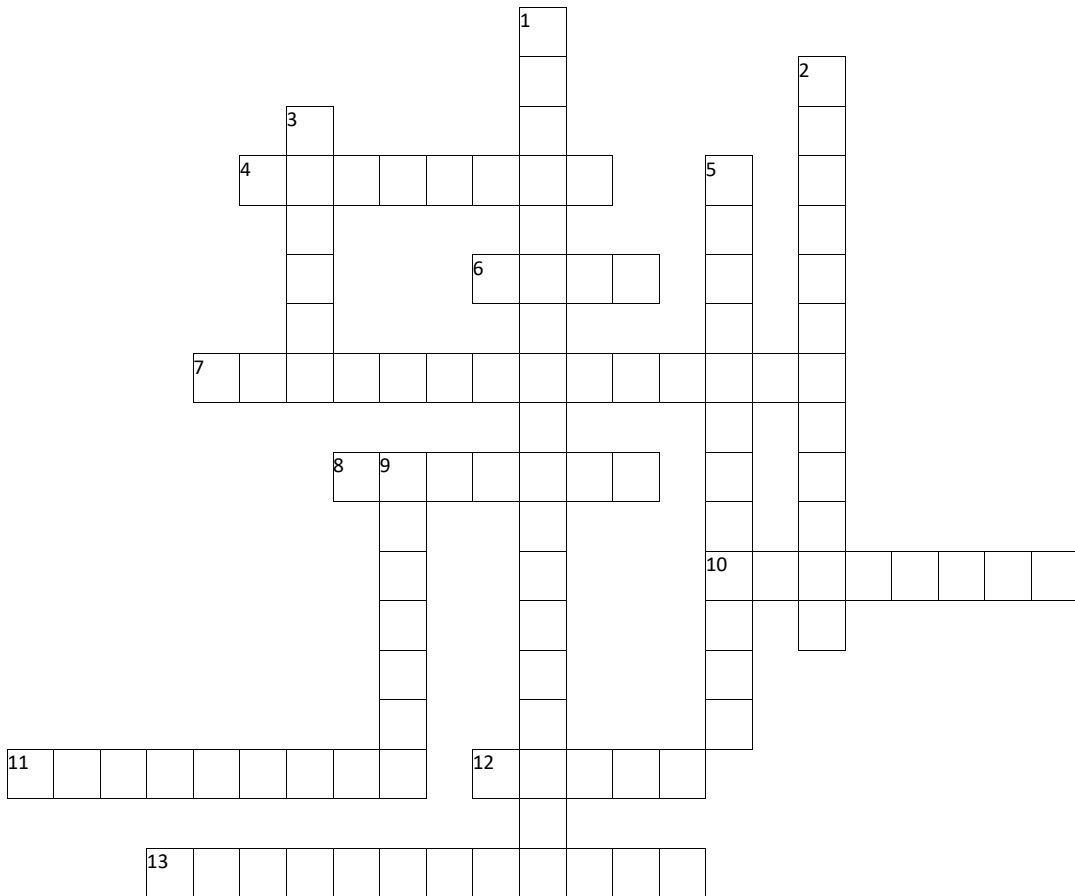
In this way, Deity (via monad, soul, and lifetime) experiences itself in the physical: growing, expanding, and fully discovering itself. This is what is meant by "To rise you must fall": Deity can only discover

What do you make of this?! Please do write in and tell us and let us know if you try this yourself and what your results were.

Thank you to all those who wrote in with their thoughts and interpretations last month. Please do let us know if you would like to have them published in the next edition of the Correllian Herald. Or if you wish to tell us about a particular form of divination or spread, or tarot deck, or rune set or have your own interpretations featured then please send them to – heraldeditor@gmail.com



The Temple of the 8 Festivals Crossword



Across

- 4. Type of cooking instrument associated with potion making
- 6. Night of the _____
- 7. End of the _____
- 8. Festival of the _____
- 10. Animal associated with witches
- 11. Common celebration held at this time of Year
- 12. Type of Sabbat
- 13. Type of light used for decoration

Down

- 1. The veil is said to be the thinnest on this date
- 2. Popular activity undertaken at this time of year
- 3. Lit object placed inside a carved out pumpkin
- 5. Party game play during celebrations this time of year
- 9. Harvest food associated with and decorated at this time of year

UK Correllian Temples Online Rituals November 2021

NB: PLEASE NOTE - Daylight Savings Time ends in the UK and Europe on Sunday 31st October
Not all countries end Daylight Savings Time on the same day so please check timings of rituals in your time zone carefully <http://www.timeanddate.com>

NB: PLEASE NOTE - Daylight saving time ends in the US and Canada on Sunday 5th November
Please check the timings of rituals in your time zone carefully. <http://www.timeanddate.com>



The Temple of the 8 Festivals online Samhain Ritual - <http://festivaltemple.co.uk/>

Monday 1st November - 9pm GMT UK time (5pm EDT/2pm PDT US time)

Online Ritual Room: <http://www.chatzy.com/Temples-Ritual-Room>



The Temple of Isis online Egyptian Ritual - <http://isis.houseofneteru.com/>

Tuesday 2nd November - 9pm GMT UK time (5pm EDT/2pm PDT US time)

Online Ritual Room: <http://www.chatzy.com/Temples-Ritual-Room>



Temple of the Moon online New Moon Esbat - <http://darkmoonrising.co.uk/>

Wednesday 3rd November - 9pm GMT UK time (5pm EDT/2pm PDT US time)

Online Ritual Room: <http://www.chatzy.com/Temples-Ritual-Room>



The Healing Temple online Healing Ritual - <http://thehealingtemple.org>

Friday 5th November - 9pm GMT UK time (5pm EDT/2pm PDT US time)

Online Ritual Room: <http://www.chatzy.com/Temples-Ritual-Room>



Temple of Contemplation online Peace Ritual - <http://contemplation.correlliantradition.co.uk/>

Wednesday 10th November - 9pm GMT UK time (4pm EST/1pm PST US time)

Online Ritual Room: <http://www.chatzy.com/Temples-Ritual-Room>



The Healing Temple online Healing Ritual - <http://thehealingtemple.org>

Friday 12th November - 9pm GMT UK time (4pm EST/1pm PST US time)

Online Ritual Room: <http://www.chatzy.com/Temples-Ritual-Room>



Order of Reiki online Reiki Healing Ritual - <http://www.orderofreiki.org/>

Wednesday 17th November - 9pm GMT UK time (4pm EST/1pm PST US time)

Online Ritual Room: <http://www.chatzy.com/Temples-Ritual-Room>



The Healing Temple online Healing Ritual - <http://thehealingtemple.org>

Friday 19th November - 9pm GMT UK time (4pm EST/1pm PST US time)

Online Ritual Room: <http://www.chatzy.com/Temples-Ritual-Room>



Temple of the Moon online Full Moon Esbat - <http://darkmoonrising.co.uk/>

Monday 22nd November - 9pm GMT UK time (4pm EST/1pm PST US time)

Online Ritual Room: <http://www.chatzy.com/Temples-Ritual-Room>



Temple of Gaia online Gaia Healing Rite - <http://templeofgaia.co.uk/>
Wednesday 24th November - 9pm GMT UK time (4pm EST/1pm PST US time)
Online Ritual Room: <http://www.chatzy.com/Temples-Ritual-Room>



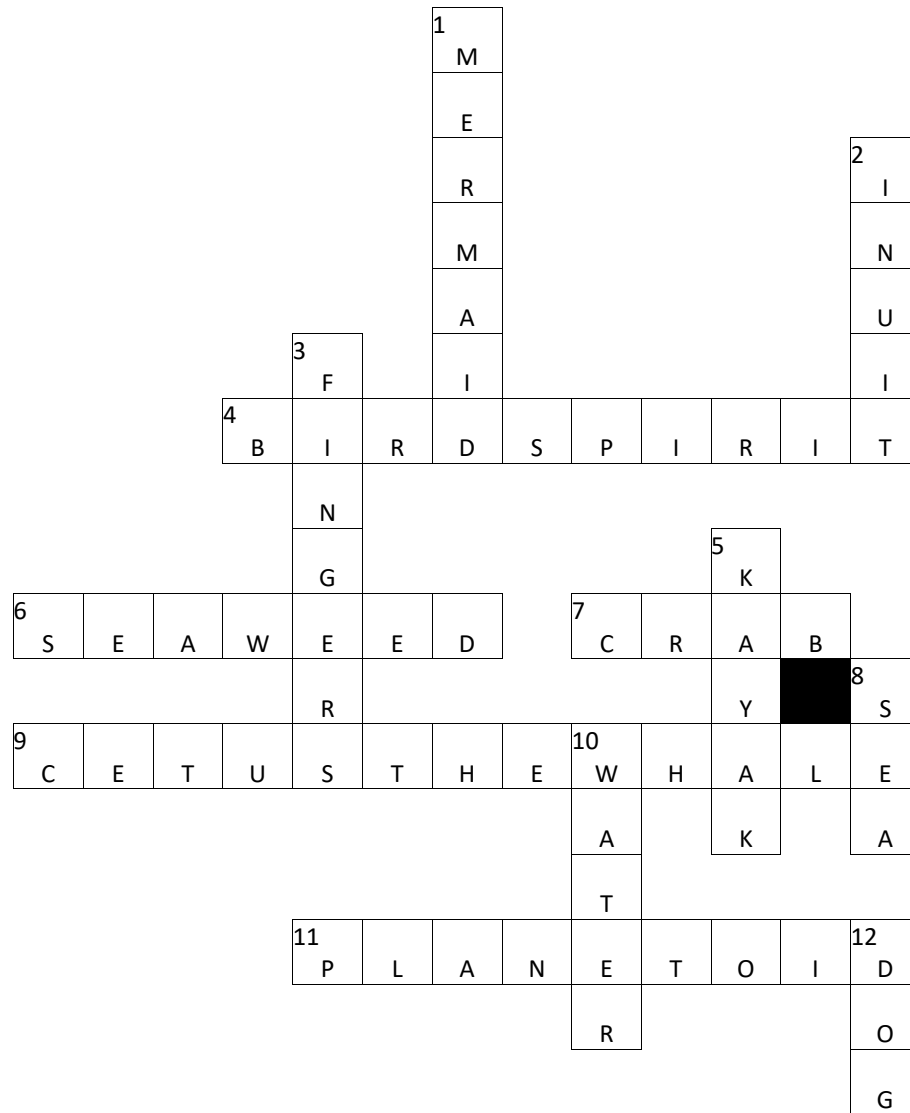
The Healing Temple online Healing Ritual - <http://thehealingtemple.org>
Friday 26th November - 9pm GMT UK time (4pm EST/1pm PST US time)
Online Ritual Room: <http://www.chatzy.com/Temples-Ritual-Room>



The Temple of Eternal Memorials online Memorial Ritual - <http://www.eternalmemorials.org/>
Monday 29th November - 9pm GMT UK time (4pm EST/1pm PST US time)
Online Ritual Room: <http://www.chatzy.com/Temples-Ritual-Room>

- To sign up for the Temples mailing list to receive ritual reminders go here - [Mailing List \(correlliantradition.co.uk\)](http://correlliantradition.co.uk)
- To find out more information about Online Rituals please go here - <http://templesritual.correlliantradition.co.uk/RitualInformation.html>
- All online rituals are sponsored by the Temple of Sedna and can be found on the Temples Calendar - <http://templesritual.correlliantradition.co.uk/TemplesCalendar.html>

The Temple of Sedna Crossword



Across

- 4. Sedna was tricked into marrying a
- 6. Sea plant
- 7. Sea Crustation
- 9. Name of constellation near Sedna the planetoid
- 11. A large _____ discovered in 2003 named after the Goddess of the Sea

Down

- 1. Mythical sea-creature representing Sedna
- 2. Race Sedna originally came from
- 3. Digits Sedna's father cut off
- 5. Type of boat Sedna used to escape in
- 8. Sedna Goddess of the _____
- 10. Element associated with Sedna
- 12. Animal Sedna's father forced her to marry as a punishment

The Temple of Isis Word Search

L C K U C B B A R E L A M E F M S R T T I K M M
 S N S T L E E L U N I C S W X P C V W M C D C X
 G D B C I G A M F O Y D A L T A E R G Q T L W T
 N O E H M R U B V E A L I H P F O Y D A L G U M
 I O N Y O B T Q B U M A W J I X N U T U J O O R
 K L E Q T S I X E D X D L W O K P S Z H P O G D
 F F F Y H Q F E G U N A T D S I S L Y Q N W A E
 O E A S E J U Y Z T T R G C I X V D H S I U I P
 R L C R R E L E D C E G U L R Y T K H F G M M B
 E I T L O N G O M X J N I J I J T I E H K K H F
 K N R A F O O F D P L Y F V S H N O T N Q O R E
 A E E D T E D R O W T L T U E I F E R P I Y E M
 M H S Y H N D A T T U E N F N R R C Y H G N U A
 V T S O E I E C X E U X T G A O O Q M W V O N L
 H F O F G V S J C S S U O I F B U F U S J U K E
 R O F S O I S F I T M V B S S P E I L T B E N H
 H X T E D D E S K I E W E E Z E K G V I F I C O
 G I H K S E I A Q R U B B U N P B P S N F X I R
 W R E H O H W K T S M U S Q E S U F Y Y S E S U
 X T T E O T Z H E V B U A D L O I R O E B I X W
 T A U T E T E G N D C D O Y I S D S T Y Q F H Y
 O E A E Z S A E S E H T F O R A T S I Q D O K U
 A R T S E S Y H T H P E N S D M E Z R W O A I D
 Q C H A N Z H G N Z T U D L J C Q L V P M A L G

Anubis Beautiful Goddess Benefactress of the Tuat Creatrix of the Nile flood

Daughter of Seb Eye of Ra Female Horu Female Ra Geb Giver of life

Great Lady of Magic Isis Isis-Nebut

Lady of Besitet Lady of Philae Lady of Sekhet Maker of Kings Moon Shining Over the Sea

Mother of the Gods Nephthys Net Nut Osiris Set Star of the Sea

The Divine One Wife of Ra

The Temple of Gaia Word Scramble

1. UYAETB Beauty
2. CSAHO Chaos
3. NCUROS Cronus
4. HTAER Earth
5. EEGYRN Energy
6. RSOE Eros
7. AAEG Gaea
8. GAAI Gaia
9. DOSGSED Goddess
10. RGEEN Green
11. HADSE Hades
12. ARNHMOY Harmony
13. HIANELG Healing
14. GIVILN Living
15. MHTERO Mother
16. EPECA Peace
17. TUNSOP Pontus
18. ESSOSNA Seasons
19. YKS Sky
20. ASRAURTT Tartarus
21. TTSNAI Titans
22. TAILRUNQITY Tranquility
23. NEIESUVR Universe
24. AUURNS Uranus

[Chartered Bodies of the Correllian Tradition](#)

Witan Shrines are the first level of the Temple-Making Process. Witan Shrines are created by Charter of the Tradition and may progress to Full Temple status over the course of several years or remain at Witan Shrine status indefinitely.

A list of current Witan Shrines may be found HERE: <http://correllian.weebly.com/witan-shrines.html>

Proto-Temples are groups which have progressed beyond the status of Shrines and are on their way to becoming Full Temples but have not yet achieved that status.

A list of current Proto-Temples may be found HERE: <http://correllian.weebly.com/proto-temples.html>

Full Temples of the Correllian Tradition have completed the Temple-Making Process and, if headed by a Third Degree, have representation on the Witan Council. A Full Temple can perform all of the functions of a Temple and may in some cases have multiple branches.

A list of current Temples may be found HERE: <http://correllian.weebly.com/temples.html>

Formal Shrines are Shrines that are dedicated to specific activities of a limited nature. Formal Shrines may exist as an aspect of a larger group or may stand alone in their own right.

A list of current Formal Shrines may be found HERE: <http://correllian.weebly.com/formal-shrines.html>

Personal Shrines are an aspect of an individual Correllian member's personal piety and are not bodies of the Tradition as such. Personal Shrines exist wholly at the discretion of the member, however the Tradition does acknowledge them upon request.

A list of current Personal Shrines may be found HERE: <http://correllian.weebly.com/personal-shrines.html>

Orders are associations within the Tradition dedicated to specific skills, tasks, or interests. This sort of Order is not to be confused with the Meritorious Orders which are awarded in recognition of service.

A list of current Orders may be found HERE: <http://correllian.weebly.com/orders.html>

Houses of Contemplation are established to facilitate the temporary or permanent practice of the contemplative religious life. Depending upon the rules of the specific House of Contemplation guests may come for spiritual retreats of designated length, or to pursue a life of permanent contemplation in the manner of a Monastery.

A list of current Houses of Contemplation may be found HERE: <http://correllian.weebly.com/houses-of-contemplation.html>

For information on how to start a Shrine, Order or Correllian Study Group or for an application form contact the Witan Herald: witanherald@gmail.com

Membership Groups

Outer Court Department

<https://www.facebook.com/groups/265398186909862>

This is a social group for all the members of the Outer Court of the Correllian Tradition. Feel free to share, discuss, and enjoy with all our wonderful Correllian family around the Globe!

Correllian Membership Hub

<https://www.facebook.com/groups/CorrellianMembershipGroups>

Correllian membership group for all Correllian members

Correllian Clergy

<https://www.facebook.com/groups/CorrellianClergy>

Group for all members of Correllian Clergy

Witan Herald's Office

<https://www.facebook.com/groups/WitanHeraldOffice>

This is where general membership and clergy may directly contact the Witan Herald

Correllian Herald - Newsletter

www.facebook.com/groups/correllianherald/

Correllian Herald Publication Group. This group is for the distribution of the Correllian Herald Newsletter.

Correllian Prayers

<https://www.facebook.com/groups/2112247592362824>

To provide a supportive venue where all Correllians, friends and family may post prayer requests.

Correllian Elder's Office

<https://www.facebook.com/groups/133563646851853>

This Facebook group is for ALL TRADITION members to enter and submit a comment.

The Correllian Temples, Shines, Groups and Project Keepers

<https://www.facebook.com/groups/1508370089410767>

The Correllian Temples, Shines, Groups and Project Keepers is a place for all Third Degrees, Second Degrees, First Degrees, Temple Heads, Shrine Heads, Group Heads, and Project Keepers. Purpose: is so that all groups can share open communication with each other. Giving each other support and encouragement. As well as hopefully, work on collective projects from time to time.

Herald Adverts & Articles

Disclaimer: Any views expressed within any articles in this publication are not necessarily the views of the Correllian Tradition the Correllian Herald Publication or the Correllian Herald Editor and staff. Any groups advertised within the Herald, which are not part of or affiliated to the Tradition, are not endorsed by the Tradition.

Writers:

Firefay - France

Rev. Bella - Denmark

Lady Wolfciara – Sweden

Rev. Equinox Silvermoon - UK

Rev. Winterghost - UK

Editor Lady Anna - UK

Send your adverts, articles and inclusions to: heraldeditor@gmail.com

If you would like to write articles or be an online reporter for the Herald, please contact the Herald editor:
heraldeditor@gmail.com

The Correllian Herald is a monthly publication issued on the first Monday of the month.

© Correllian Herald Publications Established 2007